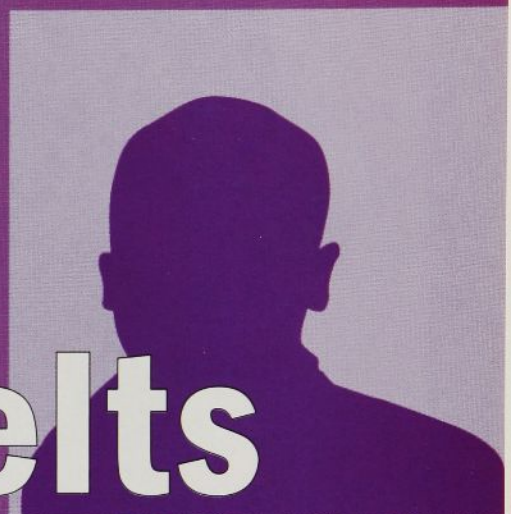
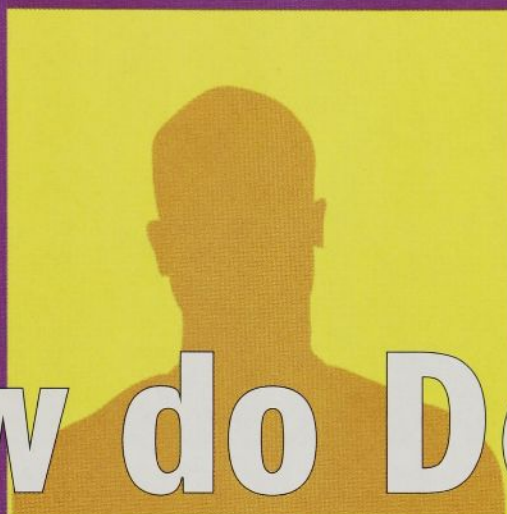
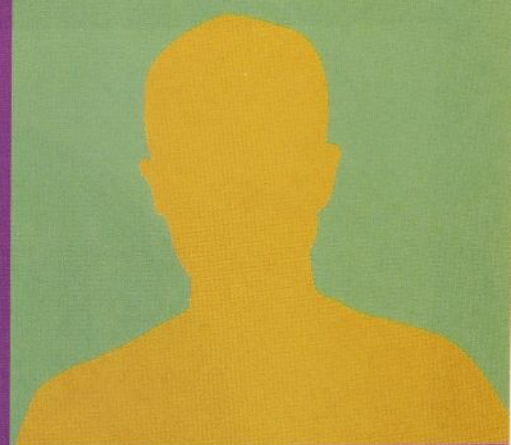
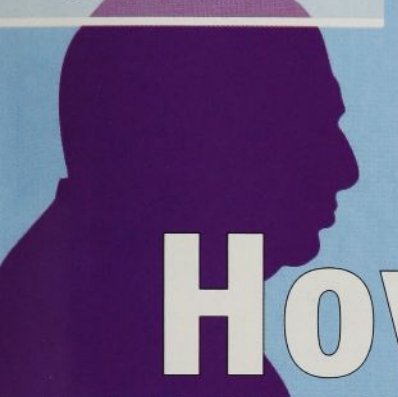


The Rainbow

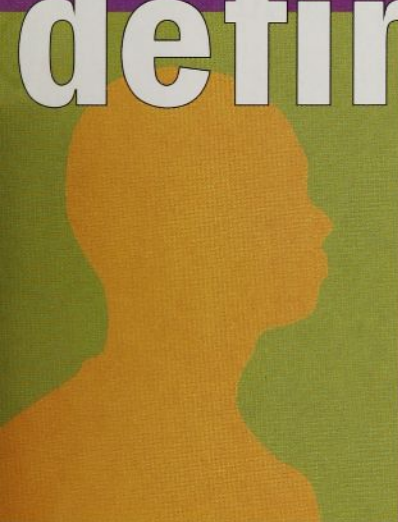
The magazine of Delta Tau Delta  
International Fraternity

JUNE 2006

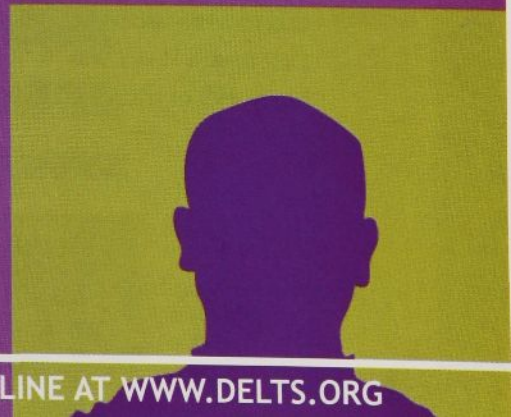
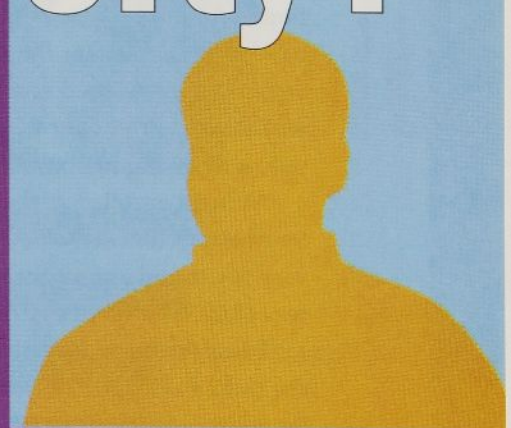
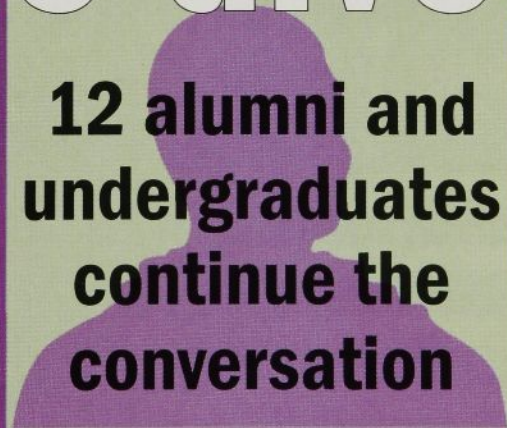
Committed to Lives  
of Excellence



# How do Delts define diversity?



**12 alumni and  
undergraduates  
continue the  
conversation**

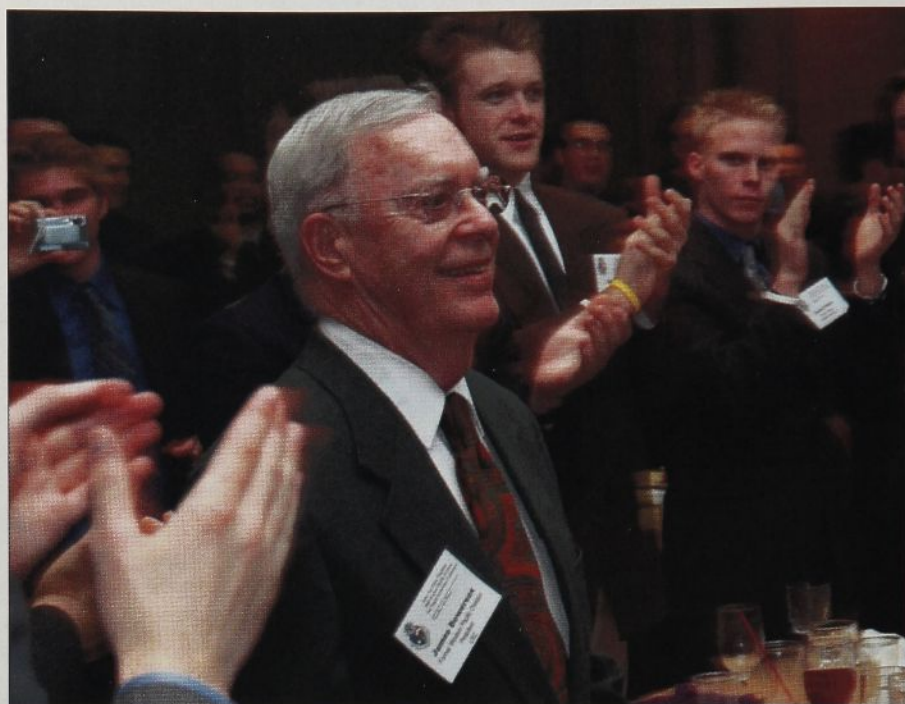


VISIT THE DELT COMMUNITY ONLINE AT [WWW.DELTS.ORG](http://WWW.DELTS.ORG)





*In his own words...*



**Jim Bowersox (USC, 1951) receives an ovation at the 2006 Western Pacific Division Leadership Conference during a Crystal Vision Award ceremony in his honor.**

## Jim Bowersox receives Crystal Vision Award

The Crystal Vision Award of the Delt Foundation recognizes alumni and friends who have made significant financial gifts and future commitments to the Fraternity. Jim Bowersox was the seventh donor to receive the award. He tells why giving has been so important to him:

“When I enrolled at the University of Southern California in 1947, I was young, not very smart and except for a couple of people, I was alone on a very large campus.

“I was fortunate enough to receive a bid from the Delta Pi Chapter of Delta Tau Delta. Becoming a Delt and living in the Delt house really improved my college life. It opened my eyes and gave me a new and broader horizon. Being a Delt meant that I was ‘in’ on a large campus, had a house-full of friends and great opportunities.

“I urge all Delts to make plans to support the Fraternity financially either through their annual gifts or their estate plans. Young men need our help and I believe we all have a role to play in their development.”

Many of us felt the same as Jim Bowersox when we first stepped on campus — away from home for the first time and alone in a crowd of strangers. Delta Tau Delta helped him find his way. The Delt Foundation is asking you to help do the same for the next generation.

For more information, contact the Foundation:

Ken File, president

[ken.file@delts.net](mailto:ken.file@delts.net)

[www.deltfoundation.org](http://www.deltfoundation.org)

... for the education of youth ...

**“REMEMBERING THOSE WHO FOLLOW...”**

Delta Tau Delta Educational Foundation

10000 Allisonville Road | Fishers, IN 46038 | Phone 888-383-1858

[www.deltfoundation.org](http://www.deltfoundation.org)





ΔΤΔ  
DELTS

## The Next Delt

name of man being recommended

home address

phone number

school the man will attend

activities, academic honors or other achievements that you know about this man

your name

chapter where you were initiated

your relationship to man being recommended

your address

your phone number

your e-mail address

Complete this page and mail it to Delta Tau Delta Fraternity  
10000 Allisonville Road, Fishers, IN 46038-2008  
or visit [delts.org](http://delts.org) and click "recommend a man."

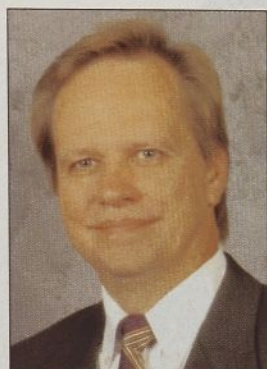


# From the President

## A final 'Thank You' to my Delt brothers

This is my final column for *The Rainbow* as international president. My term ends in August at the 2006 Brickyard Karnea.

There are too many people to thank for their assistance and support the past two years. So, I will simply say thank you to the Central Office, the Educational Foundation and all my Delt brothers and pledges. It has been my honor to represent our beloved Fraternity, and I am very proud of all our work moving Delta Tau Delta forward.



I was especially proud to be part of an Arch Chapter that developed a strategic plan which will drive our success for years to come.

Among the many accomplishments during my term, we hired a director of alumni affairs. He will focus on building our alumni base, developing and implementing new training opportunities for alumni volunteers, helping retain these volunteers and building an alumni mentor list undergraduates can leverage after they graduate.

The Delt Helping Delt campaign proved how much brotherhood means to our organization. Because of the generous giving spirit of numerous Delt undergraduates and alumni, we raised nearly \$30,000 for grants that will go to Delt undergraduates affected by presidentially declared national disasters.

We formed the National Housing Committee, focused on providing leadership and assistance to house corporations and chapters that want to improve their housing or look for alternatives. We averaged more than 2,400 pledges the past two years and have averaged more than 6,000 undergraduate members during that time - both 15-year highs for Delta Tau Delta.

There are many more examples of how we worked together to give current Delt better opportunities to succeed and future men the promise of a great Delt experience.

As I leave, I want to issue a challenge to those who follow. Honor those who came before you and gave so much in time, talent and treasure to provide you the opportunities you have as Delt today. Thank those who give today to ensure that your Delt experience as an undergraduate is the best it can be. Finally, commit yourselves to giving back to our Fraternity so that thousands of young men in the future can enjoy membership in the greatest fraternity there is - DELTA TAU DELTA.

You hold the future of our Fraternity in your hands. Use truth, courage, faith and power to guide us on our future journeys.

I look forward to watching our Fraternity grow in both quality and quantity. I will continue to offer my services to any Delt undergraduate, alumni or chapter as a brother. Even though I can never repay our Fraternity for all it has afforded me, I can pay it forward so more Delt get more opportunities to become the best they can be.

God bless you all and continue to bless Delta Tau Delta.

*Carl R. Brantley*

Arch  
Chapter

Carl R. Brantley [cbrantley53@adelphia.net]

Kenneth L. "Rock" Clinton [kenneth\_clinton@tamu-commerce.edu]

Alan G. Brackett [abrackett@mbib.com] Travis O. Rockey [torockey@postandcourier.com]

James O. Selzer [jselzer@stinsonmoheek.com] Gregory A. Peoples [gpeoples@emich.edu]

James Garboden [jgarboden@adelphia.net] Don Kindler [ddk@wideopenwest.com]

Jody Danneman [jody@atlanta-imagearts.com]

Tom Ray [thomasmray@aol.com] Chuck Safris [wpdpres@mchsi.com]



### [ INTERNATIONAL OFFICERS ]

Carl R. Brantley	PRESIDENT
Dr. Kenneth L. "Rock" Clinton	VICE PRESIDENT
Alan G. Brackett	SECOND VICE PRESIDENT
Travis O. Rockey	TREASURER
James O. Selzer	SECRETARY
Gregory A. Peoples	DIRECTOR OF ACADEMIC AFFAIRS
James W. Garboden	EASTERN DIVISION PRESIDENT
Donald D. Kindler	NORTHERN DIVISION PRESIDENT
Jody B. Danneman	SOUTHERN DIVISION PRESIDENT
Thomas M. Ray	WESTERN PACIFIC DIVISION PRESIDENT
Charles E. Safris	WESTERN PLAINS DIVISION PRESIDENT

### [ CENTRAL OFFICE STAFF ]

The Delta Tau Delta Central Office can be reached by calling 1-800-DELTS-XL.

Jim Russell	EXECUTIVE VICE PRESIDENT
Garth Eberhart	ASSISTANT EXECUTIVE VICE PRESIDENT
Alan Selking	DIRECTOR OF BUSINESS AFFAIRS
Daniel S. Couladis	DIRECTOR OF LEADERSHIP DEVELOPMENT
Nick Goldsberry	DIRECTOR OF EXPANSION
Matthew Kozlowski	ASSISTANT DIRECTOR OF LEADERSHIP DEVELOPMENT
Matthew D. Leonard	DIRECTOR OF CHAPTER SERVICES
Andy Longo	DIRECTOR OF RESIDENTIAL LIFE
Christopher J. Martz	DIRECTOR OF COMMUNICATIONS
Timothy H. Nelson	DIRECTOR OF ALUMNI AFFAIRS
Vicky Halsey	OFFICE MANAGER
Wendy Weeks	ACCOUNTING MANAGER
Candice McQuitty	ACCOUNTS RECEIVABLE
Rebecca Haley	ADMINISTRATIVE ASSISTANT
Veronica McSorley	ADMINISTRATIVE ASSISTANT
Lesla Purcell	ADMINISTRATIVE ASSISTANT
Becky Stuck	ADMINISTRATIVE ASSISTANT
Lisa Trout	ADMINISTRATIVE ASSISTANT

### [ EDUCATIONAL FOUNDATION BOARD ]

Norval B. Stephens, Jr.	CHAIRMAN
Richard H. Englehart	LIFE DIRECTOR
Edwin L. Heminger	LIFE DIRECTOR
A. Carter Wilmot	LIFE DIRECTOR
Charles E. Bancroft	Kent R. Hance
Richards D. Barger	W. James Host
Murray M. Blackwelder	David B. Hughes
Alan G. Brackett	O.K. Johnson
Carl R. Brantley	Kenneth J. Kies
Dennis A. Brawford	Donald G. Kress
John A. Brock	David L. Nagel
Thomas F. Calhoun, II	John W. Nichols
Dr. Robert F. Charles, Jr.	Travis O. Rockey
Kenneth (Rock) L. Clinton, Jr.	James D. Selzer
John W. Fisher	Gregory A. Peoples
John W. Gleeson	

### [ EDUCATIONAL FOUNDATION STAFF ]

The Delta Tau Delta Educational Foundation can be reached by calling 1-317-284-0210.

Ken File	PRESIDENT
Sonya Gill	CHIEF FINANCIAL OFFICER
John Mainella	DIRECTOR OF DEVELOPMENT
Jeremy Vanscoy	ANNUAL FUND DIRECTOR
Karen Barich	ADMINISTRATIVE ASSISTANT
Carla Parent	ADMINISTRATIVE ASSISTANT
Maurie Phelan	ADMINISTRATIVE ASSISTANT

COMMITTED TO LI



# The Rainbow

JUNE 2006  
VOL. 131 NO. 3

## [ EDITORIAL STAFF ]

James B. Russell PUBLISHER

Jason L. Young THE RAINBOW EDITOR

Joseph H. "Jay" Langhammer SPORTS AND ENTERTAINMENT COLUMNIST

Laurie Lattimore-Volkman COPY EDITOR

## [ HOW TO CONTACT ]

Contact The Rainbow staff via e-mail at [rainbow@delts.net](mailto:rainbow@delts.net) or by calling 317-284-0203.

## [ RAINBOW MISSION ]

INFORM members of the events, activities and concerns of interest to members of the Fraternity.

ATTRACT and involve members of the Fraternity via appropriate coverage, information and opinion stories.

EDUCATE present and potential members on pertinent issues, persons, events and ideas so that members may be aware of and appreciate their heritage as Delts.

SERVE as an instrument of public relations for the Fraternity by presenting an image of the Fraternity commensurate with its quality and stature.

ENTERTAIN readers with its information and quality writing and editing, so that it is a pleasure to read and share with others.

## [ SUBSCRIPTIONS ]

Members initiated prior to January 1, 2001, who executed the Loyalty Fund notes required when they were initiated shall be considered as subscribers to The Rainbow for life without further charge. Members initiated after January 1, 2001, will receive The Rainbow at no charge for ten (10) years after the date initiated at which time the member will receive an option to renew his subscription for various terms at costs to be determined from time-to-time by joint action of the Arch Chapter and Undergraduate Council.

## [ SUBMISSIONS ]

All letters to the editor, chapter reports, alumni notes, alumni chapter reports, news stories, photographs, manuscripts, subscriptions and death notices for publication should be sent to Jason L. Young, Director of Communications, 10000 Allisonville Road, Fishers, Indiana 46038-2008.

## [ HOW TO CHANGE AN ADDRESS ]

Visit [www.delts.org](http://www.delts.org) and click on "change of address" under the alumni pull-down menu. You may also call 317-284-0203 or send address changes to 10000 Allisonville Road, Fishers, IN 46038-2008.

## [ MEMBERSHIPS ]

National Interfraternal Conference  
College Fraternity Editors Association

## [ PERIODICAL STATEMENT ]

The Rainbow (ISSN 1532-5334) is published quarterly for \$10 per year by Delta Tau Delta Fraternity at 10000 Allisonville Road, Fishers, Indiana 46038-2008; Telephone 1-800-DELTSXL; <http://www.delts.org>.

Periodical Postage paid at Fishers, Indiana and at additional mailing offices.

POSTMASTER: Send address changes to Delta Tau Delta Fraternity, 10000 Allisonville Road, Fishers, Indiana 46038-2008.

Canada Pub Agree #40830557. Canada return to: Station A, P.O. Box 54, Windsor, ON N9A 6J5 [cpcreturns@wdsmail.com](mailto:cpcreturns@wdsmail.com)

S OF EXCELLENCE

## In this issue

### On the Cover

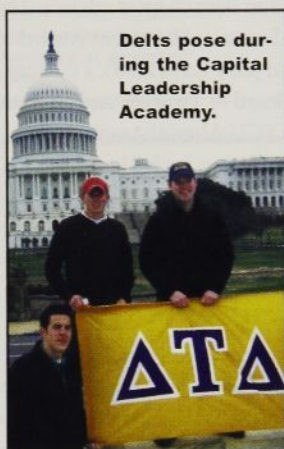
# 26

The landscape of college campuses is changing, and so is the makeup of our membership.

As schools diversify, chapters continue to show strength choosing men worthy of being Delts who might not have previously been considered.



### Features



Delts pose during the Capital Leadership Academy.

#### Learning leadership in Washington

# 20

Delta Tau Delta hosted its first spring break leadership academy with 25 undergraduates from 51 chapters learning about becoming better leaders in our nation's capital.

#### Beta Phi returns to Ohio State

# 11

The Beta Phi Chapter made a comeback after more than a four-year absence when 39 men became Delts in May.

### Departments

6	Fraternity Headlines	14	Chapter Eternal
12	Alumni in the News	16	Delt Spotlight
12	Delts in Entertainment	22	Foundation Headlines

### EDITOR'S NOTE

People tend to define the word "diversity" in their own way, depending on their experiences. I wanted to avoid a word that came with so much baggage, but what I came to realize was that too often concerns about semantics get in the way of good communication. As we put together this issue highlighting Delt chapters and members who have embraced the word in their beliefs, values and actions, it became clear that "diversity" fits the bill. Knowing some of the subject matter might bring about debate and castigation, we hope you will consider this topic for what it is – a broad interpretation of an important issue for our Fraternity and our society. The stories starting on page 26 provide a broad range of how Delts across the nation and generational lines define what it means to be diverse, and why they believe it sustains Delta Tau Delta.



— Jason L. Young, editor



## 125 years ago

The 22nd annual meeting of Delta Tau Delta, conducted Aug. 17-18, 1881 at the Monongahela Hotel in Pittsburgh, was highlighted by the welcome address of Dr. Rhodes S. Sutton (Jefferson, 1862) who recounted his historic ride of 1861 with Samuel S. Brown from Canonsburg, Pa., to Bethany, Va. He concluded his remarks by saying, "Strive to be noble men and the objects of our dear brotherhood will be personified in you all!"

## 75 Years Ago

Meeting for the first time in the Pacific Northwest and only the third time west of the Mississippi River, the 1931 Seattle Karnea elected Norman MacLeod (Pittsburgh, 1917) to his third two-year term as president. In legislative business, a committee was formed to study the establishment of a permanent national headquarters.

## 60 Years Ago

With official registration of 1,055 and 82 chapters represented, the 1946 Chicago Karnea at the Palmer House broke the convention attendance record. *The Rainbow* also boasted that Delta Tau Delta had broken the interfraternal record in convention attendance for the fourth time since 1907. In a more somber moment, the gathering paid tribute to the 307 Delts who had given their lives in service of their country during World War II which had ended the previous summer.

## 40 years ago

Five outstanding alumni, including entertainer Jim Nabors (Alabama, 1951), were honored at the 1966 Portland Karnea as the first recipients of the Fraternity's Alumni Achievement Award. The others were Robert C. Becherer (Purdue, 1923), George M. Brunzell (Idaho, 1936), R. Carl Chandler (Emory, 1941) and S. Blackwell Taylor (Purdue, 1924). Also at the Portland Karnea, Tom C. Clark (Texas, 1922), a sitting justice of the U.S. Supreme Court, was elected president of the Fraternity.

## 10 years ago

The Theta Rho Chapter at the University of Dayton was installed at the 1996 Washington, D.C. Karnea. A group of 50 men, led by chartering president Bryon Crump (Dayton, 1997) were initiated at the Karnea as the Fraternity gathered for the first time in the nation's capital.

*Compiled by Jim Russell,  
executive vice president*

## TCU chapter celebrates 50th year

By Jay Langhammer

More than 100 alumni from the Epsilon Beta Chapter returned to the Texas Christian University campus March 3 to celebrate the chapter's 50th anniversary.

The event, held at the Kelly Alumni Center, also honored the newest group of initiates and undergraduate winners of several chapter awards. The evening's featured speaker was Luther King (1962), the current chairman of the TCU Board of Trustees and a former Epsilon Beta chapter advisor. The chapter's Alumni Achievement Award was presented to Jerry Ray (1958), a current member of the Board of Trustees and past president of the TCU Alumni Association.

Founding father Arch Thompson (TCU, 1955) was the oldest alumnus in attendance. The event was organized by the undergraduates and featured an enjoyable slide show with hundreds of images of TCU Delts over its first 50 years.

Chapter awards were presented to five Epsilon Beta undergraduates. Christopher King won the Steve Wickett (1972) New Initiate Award, which was presented by Steve's widow, Debbie Wickett. Brian Wilder and Patrick Sherry (who both had 4.0 grade point averages) shared the chapter's Scholarship Award. Chris Laverde earned the Larry Abrams (1968) Good Brother Award and Will Miglico received the Hog Head

Several chapters marked significant anniversaries during the past three months or will later this year. They are:

Ohio Wesleyan	140	Nov. 26
Albion	130	June 1
Emory	125	June 13
Washington State	50	Dec. 1
Bethany	40	March 5
Ball State	40	Nov. 12
Missouri-Rolla	40	Dec. 10
IU-Pennsylvania	30	May 1
California*	25	May 9
Southern Mississippi	20	March 13
Dayton	10	Aug. 10

If you need help planning an anniversary celebration or want to submit material for an upcoming *The Rainbow*, e-mail your request to [delts@delts.net](mailto:delts@delts.net).

\* The Beta Omega Chapter, originally chartered in 1896, was reorganized in 1981.

Award (named for Jerry Ray) as best intramural athlete.

Chapter consultant Ryan Weber (Kansas State University, 2005) and TCU Greek Adviser James Parker attended the celebration.

*Jay Langhammer (TCU, 1966) has been sports editor for The Rainbow since 1968 and entertainment editor since 1995. He served as a chapter consultant, a division vice president and was cited for membership in the Distinguished Service Chapter.*

## Northern Colorado honors successful first decade

By Orlin L. Camerlo

The Theta Omicron Chapter at the University of Northern Colorado celebrated its 10-year anniversary in March.

More than 50 alumni, including 12 of the founding founders and six past chapter presidents, celebrated Theta Omicron's fruitful first decade that included four Hugh Shields Award for Chapter Excellence and six Court of Honor Award recognitions.

Following a reception on the first night, a leadership breakfast at the University Center kicked off the second-day activities that included an active-versus-alumni football game.

Delta Tau Delta President Carl Brantley (Georgia Southern, 1975) delivered the keynote speech at the closing banquet and Western Plains Division President Chuck

Safris (Iowa State, 1963) also presented a plaque on behalf of the Arch Chapter during the ceremony.

Joining Brantley and Safris were Spike Frisbie (Colorado, 1947), Louie Feher-Peiker (IIT, 1982), president of the Denver Area Delt Alumni Association, and Bruce Dickinson (Colorado, 1973) who presented a framed picture to the chapter.

Northern Colorado alumni Chris Anderson (1997), Doug Kammerer (1997) and Brian Davidson (1999) received recognition for success in their professional lives. Dan Kelley (2000) and David Lindenmuth (1999) received praise for their service on the Theta Omicron House Corporation.

*Orlin L. Camerlo (Northern Colorado, 1997) serves as a division vice president in the Western Plains Division*



# Fraternity returning to Kansas, Michigan

## Appalachian State also on docket for fall expansion

Ambitious can only begin to describe the Delta Tau Delta expansion team's schedule for this fall.

The Fraternity plans three expansions, including returns to the University of Kansas and the University of Michigan. The Gamma Tau and Delta chapters, at Kansas and Michigan, respectively, both closed in 2001 because of lack of participation.

Appalachian State in Boone, N.C., represents the third expansion.

The Kansas chapter originally installed in Lawrence in 1914 and saw the initiation of 1,673 men before it closed. The university has 40 fraternities and sororities with more than 3,500 students involved in the Greek system on the campus of nearly 21,000 undergraduates.

Michigan has one of the oldest histories with the Fraternity, dating back to 1872, and the chapter in Ann Arbor initiated 1,857 men since it first arrived on campus. The university is ranked as the third-best public university in U.S. News and World Report's 2006 version of

**Opportunities to get involved**

Alumni who want to help with the expansion efforts this fall can do so in multiple ways. Here's more information about opportunities and contact information for each project:



**Kansas**

**When:** Expansion team arrives August 30  
**Needs:** Help with the alumni advisory team; recommendations of undergraduates; attendance at expansion events.  
**E-mail:** Kansas@delts.net



**Michigan**

**When:** Expansion team arrives September 13  
**Needs:** Help with the alumni advisory team; recommendations of undergraduates; attendance at expansion events.  
**E-mail:** Michigan@delts.net



**Appalachian State**

**When:** Expansion team arrives late October  
**Needs:** Help with the alumni advisory team; recommendations of undergraduates; attendance at expansion events.  
**E-mail:** AppState@delts.net

its American's Best Colleges edition, is home to nearly 60 fraternities and sororities. Nearly 25,000 undergraduate students attend the school, which claims 90 percent of its students ranked in the top 10-percent of their high school graduating class.

A rural campus, Appalachian State – known locally as “App State” – will mark the fourth active Delt group in North Carolina, joining Duke's Delt Kappa, North Carolina-

Wilmington's Zeta Tau and Belmont Abbey's Iota Zeta chapters. U.S. News and World Report ranked Appalachian State as fifth-best public institution and 13th-best school overall amongst universities in the South that grant limited doctorates.

This marks the first semester in five years Delta Tau Delta has expanded at three schools in one semester. It returned to Pennsylvania, Southern California and Tulane in fall 2001.

## Undergraduate numbers on rise

The number of men deemed worthy of accepting the responsibility of being a Delt continues to rise.

As of May 19, 6,469 undergraduates have paid dues this year, eclipsing the year-end total of 6,128 from 2004-05 and marking the highest total since 1991 (6,752.) Of those undergraduates, 2,337 have initiated into Delta Tau Delta this school year. That marks the highest annual total of new initiates since at least 1985-86, the oldest year for which the Fraternity has accurate membership records.

### Continuing to grow

Delta Tau Delta marked a 15-year high in the number of undergraduate members during the 2005-06 school year. Number of undergraduates during that period:

<b>2005-06:</b> 6,469*	<b>1997-98:</b> 5,824
<b>2004-05:</b> 6,128	<b>1996-97:</b> 5,826
<b>2003-04:</b> 5,808	<b>1995-96:</b> 5,855
<b>2002-03:</b> 5,521	<b>1994-95:</b> 5,720
<b>2001-02:</b> 5,725	<b>1993-94:</b> 5,803
<b>2000-01:</b> 5,742	<b>1992-93:</b> 5,729
<b>1999-00:</b> 5,913	<b>1991-92:</b> 6,001
<b>1998-99:</b> 5,682	<b>1990-91:</b> 6,752

\* As of May 19, 2006

## Cornell chapter attempts to strike out children's disease

The Beta Omicron Chapter at Cornell University raised more than \$6,000 for the Children's Tumor Foundation (CTF) with its inaugural bowling tournament and a car bash. CTF became the primary charity after hearing the story of alumnus John McCarthy (Cornell, 1989) whose

daughter has neurofibromatosis (NF), a genetic condition that causes tumors to grow on nerves, bone and skin.

The chapter held a car bash prior to the bowling tournament, purchasing a jalopy from a junkyard and charged \$1 for three swings of a sledgehammer.

## Delts plan re-colonization at Tennessee for fall 2008

The Fraternity and University of Tennessee established fall 2008 for Delta Tau Delta's return to the Knoxville campus. The Delta Delta Chapter ceased operations in fall 2005 because of a lack of participation, but the valued partnership between the Fraternity and the university resulted in the plan for a quick return to campus.

First established on April 19, 1924, the Tennessee chapter operated uninterrupted until fall 2005 and saw the initiation of 1,105 men.

The return to the university is dependent on campus conditions being favorable to the Fraternity and on substantial local alumni involvement in the re-colonization process.

### Expanding the Fraternity

Delta Tau Delta tentatively plans\* the following expansions:

#### 2007-2008

George Washington, Hillsdale, Tampa, Tennessee

#### 2008-2009

Carnegie-Mellon, Tufts

#### 2009-2010

Louisville

*Projects are subject to change, including the addition or exclusion of planned projects. For more information, contact Nick Goldsberry, director of expansion, at expansion@delts.net.*



# Staff changes bring new services, familiar faces

## UC-Riverside alumnus appointed as first director of alumni affairs

Timothy H. Nelson (University of California-Riverside, 1995), who has served the Fraternity in several volunteer roles since graduation, has been appointed Delta Tau Delta's first director of alumni affairs.

Nelson, 35, is charged with developing the new position created to better serve the Fraternity's alumni and help encourage their life-long involvement in the Fraternity. That includes their active participation with under-



**Tim Nelson**

graduate chapters and Delta Tau Delta in its entirety. Nelson also will focus on the training of alumni volunteers, invigorating existing or dormant alumni chapters, and developing a strategy to foster the understanding by undergraduate members that, throughout their post-college lives, Delta Tau Delta will ask them to be involved alumni.

"The creation of an alumni affairs position

has been a high-ranking goal since I joined the Central Office staff in 2001," said Jim Russell, executive vice president. "The employment of a full-time professional devoted to the engagement, training and retention of our alumni has been identified and prioritized by the Arch Chapter as one of the organization's key strategic initiatives."

Nelson and his wife, Candice, are the parents of two young children and live in the Dallas suburb Frisco, Texas. Nelson, who will continue to be based in Frisco can be reached at [tim.nelson@delts.net](mailto:tim.nelson@delts.net) or 800-335-8795.

## Former consultant joins leadership department

Matthew Kozlowski (Allegheny College, 2003) was hired as the assistant director of leadership development for Delta Tau Delta. He began his new post in May. He will assist Dan Couladis, director of leadership development, and be charged with assisting with the Fraternity's multiple leadership opportunities for undergraduates.



**Matt Kozlowski**

"Matt brings a wealth of knowledge from his previous experience with the Fraternity," Couladis said. "His passion for leadership development and understanding of the needs of today's students bode well for the undergraduates."

Kozlowski, 24, served the Fraternity as a chapter consultant from spring 2004 until May. Prior to traveling as a consultant, he traveled for the Fraternity as a Delts Talking About Alcohol intern.

Kozlowski can be reached at [matt.kozlowski@delts.net](mailto:matt.kozlowski@delts.net) or 800-335-8795.

## Martz returns as director of communications

Christopher J. Martz was named Delta Tau Delta's director of communications for a second time and rejoined the staff in early June.

Martz served as Delta Tau Delta's first director of communications from 2000-2004 and established the department's high standards that helped it become a leader in the Greek community.



**Chris Martz**

Martz, 34, spent the past year at Cardinal Ritter High School in Indianapolis where he served as director of communications. He graduated from Ball State University in 1994 with a degree in journalism and became an initiated member of Delta Tau Delta in 2002 after serving the Wabash chapter in several volunteer capacities.

He replaces Jason L. Young who succeeded Martz in August 2004. Young relocated to St. Louis to raise his family and pursue a career in corporate communications.

Martz can be reached at [chris.martz@delts.net](mailto:chris.martz@delts.net) or 800-335-8795.

## Letters to the Editor

# Louisiana State Delt, minister helps Hurricane Katrina victims

I was very grateful for the collected stories of hope and perseverance featured in *The Rainbow* ("Delts answered call after Katrina rocked Gulf Coast," December 2005). It is reassuring as both a Delt and lifetime resident of New Orleans to know brothers everywhere lent a hand to fellow Delts and their families and are continuing to make efforts to help them and others throughout the Gulf Region.

I am writing in regards to a friend and brother from the Epsilon Kappa Chapter at Louisiana State University, Rev. Jason Toliver (LSU, 2000). A minister with the Shiloh Baptist Church in Baton Rouge, La., Toliver and his church helped provide housing, meals, medical care, counseling and schooling for evacuees in the difficult months following the

**Letters to the editor policy**

Submissions for Letters to the Editor can be mailed to Letters, *The Rainbow*, 10000 Allisonville Rd., Fishers, IN 46038 or e-mailed to [TheRainbowEditor@delts.net](mailto:TheRainbowEditor@delts.net). Include your name and contact information. Letters should be 100 words or fewer and *The Rainbow* reserves the right to edit for style, length and content.

storm. Eventually, they helped individuals find homes, jobs, locate family members, and were even able to give them a few thousand dollars each to re-establish themselves. Toliver and the members of Shiloh continue to tirelessly help those who reside in Baton Rouge, awaiting decisions of what is to

become of what was once their homes.

Shiloh's incredible work would not have been possible were it not for the donations from people throughout the world, looking to help those in New Orleans and the rest of the Gulf Region who lost their homes and livelihood.

Anyone wishing to make a contribution to the church's ongoing efforts can send it to: Shiloh Baptist Church Hurricane Relief  
185 Eddie Robinson Sr. Drive  
Baton, Rouge 70802  
[www.shilohbaptist.com](http://www.shilohbaptist.com)

**Greg Roques**  
**Louisiana State, 2002**  
**Harahan, La.**



2006 Miss Greek winner Angelica Lewis helped the Gamma Mu Chapter raise \$70,000 this year for cancer research and give the Miss Greek Pageant a 20-year total of more than \$1 million.



## Pageant tops \$1 million

The Gamma Mu Chapter at the University of Washington has worked for 20 years to get to where it is, and the chapter does not plan to stop anytime soon.

After bringing in \$70,000 for the 20th annual Miss Greek Pageant in April, Gamma Mu has now raised \$1,050,000 for the Fred Hutchinson Cancer Research Center since 1986. The nonprofit biomedical research institution is one of 39 facilities designated as a comprehensive cancer center in the United States. Boasting three Nobel laureates on staff, the center's goal is to prevent, diagnose and treat cancer.

"I'm thrilled with the results of the pageant," Miss Greek chairman Brayden Jessen said. "We started the beginning of the year thinking it would be a low year, and we were just hoping to reach \$1 million. We blew ourselves away at the last second."

Eight judges, including Delta Tau Delta Vice President Dr. Kenneth "Rock" Clinton, crowned Angelica Lewis this year's Miss Greek over women from 14 other sororities. The women earned points during several events such as a question and answer session, a public speaking stage and talent. Lewis, who raised more than \$8,700 of the final total, played the piano, sang and danced during the talent portion.

For spring chapter reports visit  
[www.delts.org](http://www.delts.org)

## Cincinnati alumnus honored with AAA

Peter Woo (Cincinnati, 1970) received the Fraternity's Alumni Achievement Award at a special ceremony in March during a rare visit to campus.



Peter Woo

Woo serves as chairman for the Hong Kong Trade Development Council, the statutory body responsible for promoting Hong Kong's external trade. Woo presides over a 19-member council comprising representatives of Hong Kong's major business and economic associations and government officials. The council plans and supervises the TDC's global operations, services and promotional activities through an office network covering more than 40 cities.

In the private sector, Woo has served on the international advisory boards of J.P. Morgan Chase & Co., National Westminster Bank Plc., Total Fina Elf S.A., Banca Nazionale del Lavoro and General Electric Co. Woo is chairman of Wheelock and Company Limited and its associate company, The Wharf (Holdings) Limited. He is founding chairman of Hong Kong Cable Television Limited, New T&T Limited and i-CABLE Communications Limited.

He is a member of the standing committee of the Chinese People's Political Consultative Conference and chairman of the Hong Kong-United States Business Council - Hong Kong Section. He is also chairman of the Hong Kong Environment and Conservation Fund Committee. From 1995 to 2000, he chaired the Hong Kong Hospital Authority, overseeing 46 public hospitals.

He served as council chairman of the Hong Kong Polytechnic University, Hong Kong's largest university, from 1993 to 1997.

### Georgia

The Beta Delta Chapter invites all Delts to attend the university's annual Alumni Weekend at the university Oct. 13-14, which includes the Homecoming football game between Georgia and Vanderbilt. An evening reception at the shelter is set for Oct. 13, and a tailgate with buses to and from the game and a dinner beginning a few hours after the game is set for Oct. 14. Please contact Michael Murray-Hobbs at [mmhdawg7@uga.edu](mailto:mmhdawg7@uga.edu) for further details.

### Ohio State

The 2006 Peter R. Peirce/John W. Galbreath Memorial Golf Classic will take place Sept. 22 at Golf Club of Dublin, Ohio, with proceeds delegated to scholarships

## upcoming events

named in honor of Peirce (Ohio State, 1970) and Galbreath (Ohio, 1920). The first tee time is 11 a.m. A social and dinner will follow at approximately 7:30 p.m. For more information, contact Thomas Calhoon at (614) 777-1000 or [tom\\_calhoon@hotmail.com](mailto:tom_calhoon@hotmail.com).

### Purdue

Purdue Delts are urged to circle the dates of April 13-15, 2007 for the Gamma Lambda Centennial. Plans are underway to celebrate the chapter's founding (April 20,

1907) with events throughout the weekend, highlighted by the Gamma Lambda Centennial celebration banquet on April 14 at the Purdue Memorial Union. For more information, please contact Jim Russell at 317-284-0203 or [jim@delts.net](mailto:jim@delts.net).

### Western Kentucky

The Epsilon Xi Chapter invites everyone to participate in its annual Summer Golf Fundraiser June 24. The four-person scramble will be at Trace at Bays Fork Golf Club with the money raised assisting in sending undergraduates to Karnea as well as for homecoming, recruitment and member education efforts. Contact Paul Newton (815-275-9444) to inquire about one of four packages available and other information.



# Fraternity seeks alumni to serve undergraduate chapters

The following are chapters (alphabetized by state) at which alumni are needed to serve Delta Tau Delta. If you're interested in helping, contact **Tim Nelson**, director of alumni affairs, at [alumni@delts.net](mailto:alumni@delts.net):

## Arizona

**Chapter:** Arizona (Epsilon Epsilon)

**Need:** Full complement of assistant advisors to form an Alumni Advisory Team\*

**Chapter:** Northern Arizona (Theta Omega)

**Need:** Full complement of assistant advisors to form an Alumni Advisory Team\*

## California

**Chapter:** California (Beta Omega)

**Need:** Full complement of assistant advisors to form an Alumni Advisory Team\*

**Chapter:** UCLA (Delta Iota)

**Need:** Full complement of assistant advisors to form an Alumni Advisory Team\*

**Chapter:** UC-Riverside (Theta Lambda)

**Need:** Full complement of assistant advisors to form an Alumni Advisory Team\*

**Chapter:** Stanford (Beta Rho)

**Need:** Chapter advisor and full complement of assistant advisors to form an Alumni Advisory Team\*

## Florida

**Chapter:** Florida State (Delta Phi)

**Need:** Chapter advisor and full complement of assistant advisors to form an Alumni Advisory Team\*

## Idaho

**Chapter:** Albertson (Theta Psi)

**Need:** Full complement of assistant advisors to form an Alumni Advisory Team\*

## Illinois

**Chapter:** Eastern Illinois (Zeta Rho)

**Need:** Full complement of assistant advisors to form an Alumni Advisory Team\*

**Chapter:** Illinois (Beta Upsilon)

**Need:** Full complement of assistant advisors to form an Alumni Advisory Team\*

**Chapter:** IIT (Gamma Beta)

**Need:** Full complement of assistant advisors to form an Alumni Advisory Team\*

**Chapter:** Northwestern (Beta Pi)

**Need:** Full complement of assistant advisors to form an Alumni Advisory Team\*

**Chapter:** Quincy (Iota Delta)

**Need:** Chapter advisor and full complement of assistant advisors to form an Alumni Advisory Team\*

## Indiana

**Chapter:** Ball State (Epsilon Mu)

**Need:** Full complement of assistant advisors to form an Alumni Advisory Team\*

**Chapter:** Butler (Beta Zeta)

**Need:** Full complement of assistant advisors to form an Alumni Advisory Team\*

**Chapter:** DePauw (Beta Beta)

**Need:** Full complement of assistant advisors to form an Alumni Advisory Team\*

**Chapter:** Purdue (Gamma Lambda)

**Need:** Full complement of assistant advisors to form an Alumni Advisory Team\*

**Chapter:** Wabash (Beta Psi)

**Need:** Full complement of assistant advisors to form an Alumni Advisory Team\*

## Iowa

**Chapter:** Iowa State (Gamma Pi)

**Need:** Full complement of assistant advisors to form an Alumni Advisory Team\*; House Corporation volunteers

## Kansas

**Chapter:** Baker (Gamma Theta)

**Need:** Full complement of assistant advisors to form an Alumni Advisory Team\*; House Corporation volunteers

## Massachusetts

**Chapter:** MIT (Beta Nu)

**Need:** Chapter advisor

## Michigan

**Chapter:** Eastern Michigan (Theta Xi)

**Need:** Full complement of assistant advisors to form an Alumni Advisory Team\*

## Minnesota

**Chapter:** Minnesota (Beta Eta)

**Need:** Full complement of assistant advisors to form an Alumni Advisory Team\*

tant advisors to form an Alumni Advisory Team\*

## Missouri

**Chapter:** Missouri (Gamma Kappa)

**Need:** Full complement of assistant advisors to form an Alumni Advisory Team\*; House Corporation volunteers

## North Carolina

**Chapter:** Belmont Abbey (Iota Eta)

**Need:** Chapter advisor and full complement of assistant advisors to form an Alumni Advisory Team\*

## North Dakota

**Chapter:** North Dakota (Delta Xi)

**Need:** Full complement of assistant advisors to form an Alumni Advisory Team\*

## Ohio

**Chapter:** Case Western (Zeta)

**Need:** Full complement of assistant advisors to form an Alumni Advisory Team\*

**Chapter:** Cincinnati (Gamma Xi)

**Need:** Full complement of assistant advisors to form an Alumni Advisory Team\*

**Chapter:** Dayton (Theta Rho)

**Need:** Full complement of assistant advisors to form an Alumni Advisory Team\*

**Chapter:** John Carroll Crescent Colony

**Need:** Full complement of assistant advisors to form an Alumni Advisory Team\*

**Chapter:** Kent State (Delta Omega)

**Need:** Full complement of assistant advisors to form an Alumni Advisory Team\*

**Chapter:** Kenyon (Chi)

**Need:** Full complement of assistant advisors to form an Alumni Advisory Team\*

**Chapter:** Miami (Gamma Upsilon)

**Need:** Full complement of assistant advisors to form an Alumni Advisory Team\*

**Chapter:** Ohio State (Beta Phi)

**Need:** Full complement of assistant advisors to form an Alumni Advisory Team\*

**Chapter:** Ohio Wesleyan (Mu)

**Need:** Full complement of assistant advisors to form an Alumni Advisory Team\*

**Chapter:** Wittenberg (Iota Beta)

**Need:** Full complement of assistant advisors to form an Alumni Advisory Team\*

**Chapter:** Wright State (Iota Gamma)

**Need:** Full complement of assistant advisors to form an Alumni Advisory Team\*

## Oregon

**Chapter:** Oregon (Gamma Rho)

**Need:** Chapter advisor and full complement of assistant advisors to form an Alumni Advisory Team\*

## Pennsylvania

**Chapter:** Villanova (Zeta Theta)

**Need:** Chapter advisor

## South Carolina

**Chapter:** South Carolina (Theta Eta)

**Need:** Chapter advisor and full complement of assistant advisors to form an Alumni Advisory Team\*

## Texas

**Chapter:** Texas State (Zeta Delta)

**Need:** Full complement of assistant advisors to form an Alumni Advisory Team\*; House Corporation volunteers

## Virginia

**Chapter:** Virginia Tech (Iota Zeta)

**Need:** Chapter advisor and full complement of assistant advisors to form an Alumni Advisory Team\*

## Wisconsin

**Chapter:** Lawrence (Delta Nu)

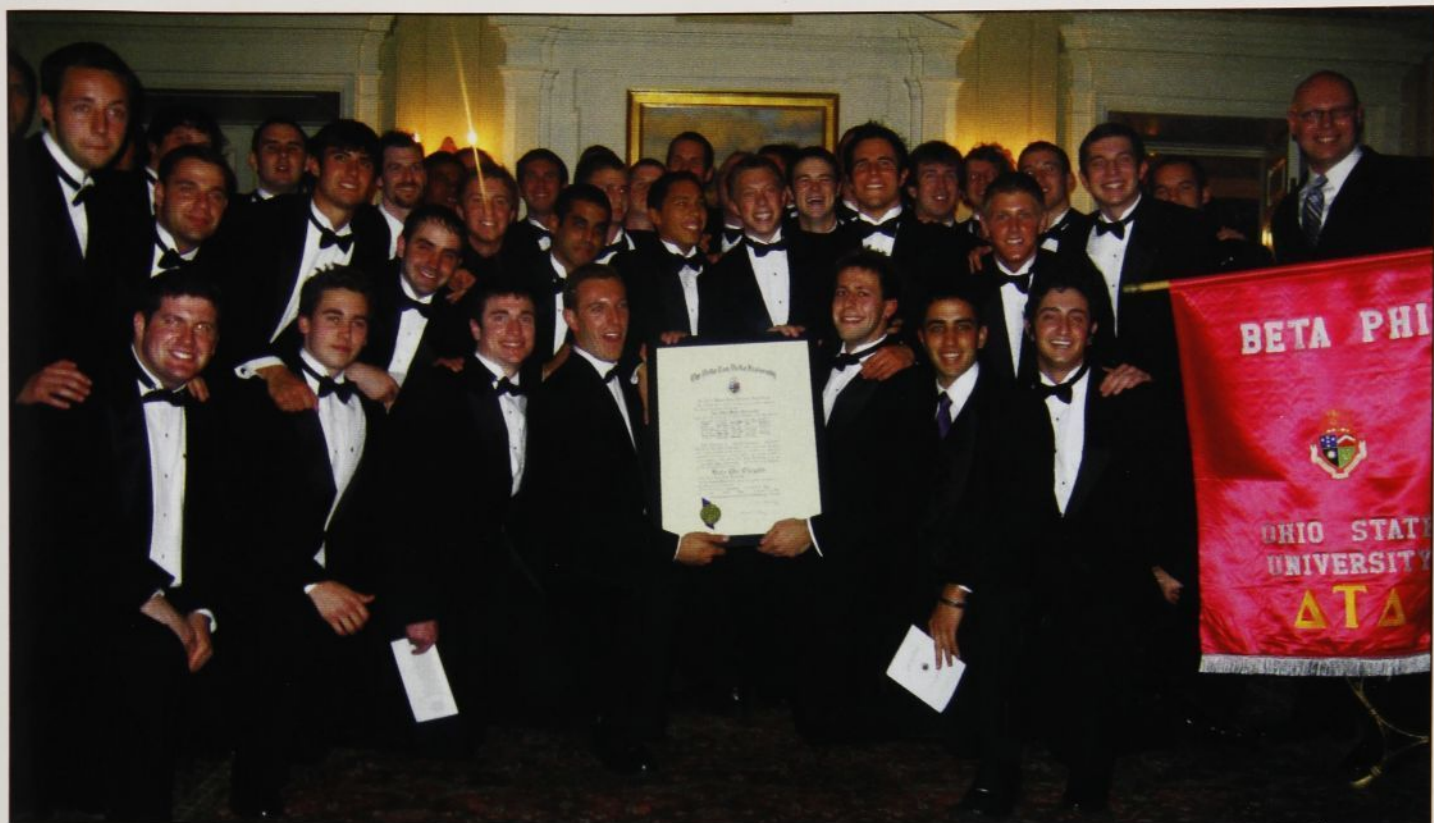
**Need:** Full complement of assistant advisors to form an Alumni Advisory Team\*

**Chapter:** Wisconsin (Beta Gamma)

**Need:** Full complement of assistant advisors to form an Alumni Advisory Team\*

\* Assistant chapter advisor, academic advisor, alumni advisor, financial advisor, leadership advisor, life-skills advisor, new member education advisor, recruitment advisor, risk management advisor.





# Beta Phi Chapter makes return to Ohio State

By Eric A. Samuels

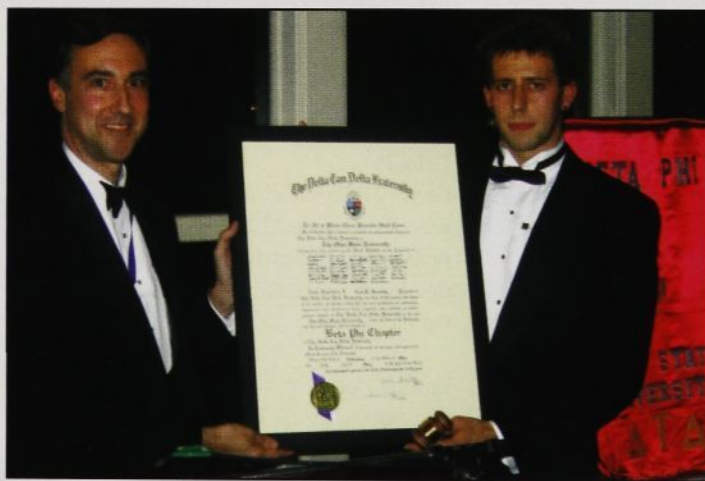
Thirty-nine men of the Beta Phi Crescent Colony of Delta Tau Delta Fraternity at The Ohio State University saw nearly two years of hard work come to fruition May 13 when they received their charter, and the Fraternity officially installed the Beta Phi Chapter.

The Iota Gamma Chapter from Wright State University capped a beautiful ceremony with its performance of the "Ritual" and the "Rite of Iris" at Ohio State's historic Orton Hall. A formal banquet at the Scioto Country Club followed the installation ceremony and continued the celebration of the Beta Phi's return after its re-colonization in November 2004.

The members of Beta Phi worked hard for the past two years to put together the chartering petition, win Greek Week and Homecoming in 2005 and be at the top of the fraternity system academically.

"The most rewarding aspect of chartering was watching the Delt fathers place the golden badge on their sons," said former colony president Chris Blunk. "Because of our efforts, these men can now share another bond."

In attendance throughout the day were



**Delta Tau Delta Second Vice President Alan Brackett presents the Beta Phi charter to the chapter's president Matt Anderson.**

family, friends, university officials and alumni, including Bruce Paschal who graduated from the university in 1946. The Delta Tau Delta national staff also came in strong numbers. Jim Russell, executive vice president; Nick Goldsberry, director of expansion; Dan Couladis, director of expansion; and Jeremy Vanscoy, annual fund director of the Educational Foundation, were on hand for the ceremony.

Delta Tau Delta Second Vice President Alan Brackett gave the keynote address and Northern Division President Don Kindler

(Ohio State, 1955) presented the Bible and the Mission and Values. The Beta Phi Chapter of Delta Tau Delta now looks forward to moving into its shelter at 67 East 15th next year and to many more years of success at Ohio State.

*Eric A. Samuels graduated June 11 with a bachelor's degree in political science and international studies from The Ohio State University, where he served as the reporting secretary for the Beta Phi colony. A resident of Alexandria, Va., he begins work for a political group in July.*



## Beta Phi



**Rev. Dr. Philip M. Hazelton** (Ohio State, 1963) was appointed as the Presbyterian Church (USA) delegate to the 75th General Convention of the Episcopal Church. The conference is in June in Columbus. Hazelton is senior minister/head of staff at the Worthington Presbyterian Church in Worthington, Ohio. Hazelton has served Worthington Presbyterian since January of 1994.

**Brett McCall** (Ohio State, 2000) was named associate state counsel for First American Title Insurance Company.

## Gamma Delta



**Geno Iafrate** (West Virginia, 1991) was named vice president and assistant general manager of the Flamingo Hotel and Casino in Las Vegas. He previously served as vice president and assistant general manager of the Grand Biloxi Casino

in Biloxi, Miss., before Hurricane Katrina destroyed the gambling boat.

## Gamma Iota

**J.K. Leonard** (Texas, 1982) a shareholder and director in the San Antonio-based law firm of Ball & Weed, PC, has been named chairman of ALFA International, The Global Legal Network, for 2006-2007. ALFA International, based in Chicago, is an international network of 120 independent law firms.

## Gamma Tau

**Anderson Chandler** (Kansas, 1948) was inducted

into the Topeka (Kans.) Business Hall of Fame, a project founded by the Junior Achievement of Northeast Kansas. Chandler serves as the chairman and president of Fidelity State Bank and Trust Co., in Topeka.



**Brig. General James H. Head** (Kansas, 1964) retired from the United States Air Force on March 1 after a 37-year career. He had served in several capacities at the U.S. Air Force Academy, including director of the nuclear

radiation laboratory, director of the advanced physics division, department head of the academy's department of physics and two stints as dean of students. His military decorations include the Legion of Merit (first oak-leaf cluster), the Meritorious Service Medal (first oak-leaf cluster), the Joint Service Commendation Medal and the Air Force Commendation Medal.

## Delta Epsilon

**Dr. L. Douglas Knight** (Kentucky, 1982) was certified as a diplomate of The American Board of Orthodontics, an elective process intended to assure the public a specialist successfully completed an educational program and an evaluation process. Knight maintains a private practice in orthodontics and dentofacial orthopedics in Louisville, Ky.

## Delta Pi

**Gregory P. Brakovich** (Southern California, 1974) was elected to the USC Board of Trustees. Brakovich serves as the CEO of real estate securities dealer manager for KBS Capital Markets Group LLC.

## Epsilon Delta

**Dan Ahrens** (Texas Tech, 1988) opened the

Gaming and Casino Fund, the first mutual fund to specialize in the casino gaming industry, managed by his Ahrens Advisors firm.

## Epsilon Iota

**William Murdie** (Kettering, 1988) was appointed director, human resources, for General Motors' sales, service and marketing division for the northeast United States. He has relocated to General Motors' Somers, N.Y., Regional Office. There he will work with the Northeast Regional leadership team focusing on performance optimization and structural cost reduction activities.

## Epsilon Kappa

**Jerry Shea Jr.** (Louisiana State, 1972) was elected unanimously chairman elect of the Board of Supervisors at Louisiana State University at the meeting of the board in April.

## Theta Epsilon

**Tom Palermo** (American, 1998) became an assistant state attorney in Florida where he recently was promoted to lead trial attorney in the Economic Crimes Unit. He prosecutes racketeering (organized crime), public corruption, cyber-crimes, complex frauds and identity theft.

## Theta Kappa

**Dustin "Dusty" Newton** (Nebraska at Kearney, 2002) has been appointed director of undergraduate recruitment and admissions at the University of Nebraska at Kearney. Newton had served as interim director of the admissions office since 2004.

## Theta Delta

**John Reid** (1993) was selected as president of the U.S. Senate Press Secretaries Association in Washington D.C., following a two-year stint as director of communications for Sen. George Allen of Virginia.

# Delts in entertainment

COMPILED BY JAY LANGHAMMER

**Duane Allen** (Texas A&M-Commerce, 1966) and The Oak Ridge Boys received a Fund for the Advancement of Music Education Award at the 10<sup>th</sup> annual National Association for Music Education dinner in early March. They received the FAME Award for their work as Official Music Ambassador for MENC's National Anthem Project. The Oak Ridge Boys also hosted the association's "The

World's Largest Concert for Feed The Children" on i/PAX and PBS stations in March. The group's latest CD is "from the heart," which Allen co-produced, and they continue to play 10-14 live concerts a month.

**Robert Armstrong** (Washington, 1913), who died in 1973, has been back in the limelight thanks to the 2005 King Kong Collection three-disk DVD set and the 2006 subsequent theater and recent DVD releases of the latest "King Kong" remake by director Peter Jackson. Considered the Fraternity's first successful film actor, Armstrong gained fame as Carl Denham, the promoter who put together the expedition to find King Kong in

the original 1933 film. He reprised his role in "Son of Kong," then starred in the 1949 film "Mighty Joe Young" as Max O'Hara, a promoter and nightclub owner. His career spanned 160 films and television appearances between 1927 and 1964.

**Chip Chinery** (Miami, 1986) had a featured role on the March 28 episode of the new ABC-TV sitcom "Sons & Daughters." He has also recently appeared on the CBS drama "The Commuters" and the NBC sitcom "Uncommon Sense." He will perform standup comedy this summer on episodes of NBC's "Last Comic Standing."

**Will Ferrell** (Southern California, 1990) will



# Kenyon alumnus captures Rice's eye, voice

**By Glenn Kessler**  
**Washington Post Staff Writer**

Christian D. Brose's rise to the heights of Washington speechwriting could have been scripted in Hollywood.

A year ago, Brose (Kenyon, 2002) was the most junior speechwriter at the State Department. When Condoleezza Rice was nominated to be secretary of state after the 2004 election, the then-national security adviser summoned the State Department speechwriting team to the White House for a discussion of her confirmation hearings.

The team went over, not sure they would hold their jobs for much longer. To their surprise, they were ushered into the White House situation room. The conversation meandered and seemed uninspired, Rice aides said, until the 25-year-old Brose shyly raised his hand and offered a suggestion that, for Rice, crystallized her foreign policy themes.

"Who is that young red-haired kid?" Rice asked one of her senior advisers, Jim Wilkinson, as they left the room. "Let's keep an eye on him."

A star was born.

Brose, now 26, was recently named Rice's chief speechwriter. He is responsible for many of the major speeches she has delivered around the world to advance the administration's message of spreading democracy, earning the admiration of Rice's top aides.

"Chris can write her voice better than anyone," Wilkinson said. "He's become one of her closest advisers on policy and communications."

Another fan is Elizabeth Cheney, a principal deputy assistant secretary of state and key participant in the administration's democracy campaign. "Speechwriting is one of the hardest jobs



Robert A. Reeder/The Washington Post

It did not take Christian Brose (Kenyon, 2002) long to impress his boss, U.S. Secretary of State Condoleezza Rice.

in Washington. Chris is one of the best," she said, praising his "mastery of the subject matter" and his "intellectual curiosity."

Rice considers Brose such an asset that she often brings him along when she travels overseas. Rice likes Brose at her side so they can work together to shape and sharpen the speeches until right before she delivers them. A speech in Brazil was altered because of a conversation Rice had on the airport tarmac when she landed in Brasilia, and Rice's signature democracy speech, given in Cairo last June, was tweaked to add language Rice had spontaneously used at a news conference a few hours before the speech.

"She trusts me to do that first draft with the vision she's given me," he said.

Brose is likable and self-effacing, devoid of the self-promotion that often comes with power in Washington. A former collegiate swimmer and avid bicyclist, the lanky Brose still says that "one of my best jobs" was being a bike messenger because he could tool around

on his wheels 10 hours a day. He still bikes to work from the apartment he shares with his wife, Molly, a painter and jewelry designer. Brose often writes Rice's speeches in his wife's studio, "with a pot of coffee at 2 a.m."

Brose was a political science major in college — what he calls a "Plato-to-NATO education." He became interested in making his mark in Washington after the Sept. 11, 2001, terrorist attacks. He was hired as an editor at a couple of serious policy journals and then applied for a job as one of Powell's speechwriters in 2004, after one of his bosses had made the move to the State Department. He thought he had little chance of being hired. "I basically got lucky," he said.

Brose likens speech writing to alpine skiing. "If you are lucky, it looks pretty in the end," he said — "the viewers don't see the falls and the endless hours."

(c) 2006, The Washington Post. Reprinted with permission.

reprise one of his most popular roles as Frank "The Tank" Ricard in "Old School 2," intended to hit theaters next year. His NASCAR comedy "Talledega Nights: The Ballad of Ricky Bobby" premieres August 4 and his workload continues to be full, including "Blades of Glory" which is set for production in 2007.

**Greg Jennings** (Oklahoma State, 1976), lead guitarist for Restless Heart, completed 26,000-mile tour of Air Force bases in Germany, Turkey, Japan, Korea and Hawaii. The whirlwind two-week tour in April was possible due to the use of Air Force KC-10 Extender advanced aerial airplane. In late April, Restless Heart began an extended

tour with two other popular 1990's country music groups, Blackhawk and Little Texas. The tour, known as the "Triple Threat Tour," continues until October.

**James Marsden** (Oklahoma State, 1995) is back on the big screen in two big 2006 films: "X-Men: The Last Stand" and "Superman Returns" (which opens June 30.) He is currently filming "Enchanted," scheduled for release in 2007.

**Matthew McConaughey** (Texas, 1992) earned induction into the Texas Film Hall of Fame in March. His comedy "Failure to Launch" had strong box office success in March and April. Currently he's in produc-

tion of "We Are...Marshall," in which he plays head football coach Jack Lengyel. The movie tells the story of a 1970 plane crash that took the lives of 75 people, including 37 Marshall players and 12 coaches and university staff members.

**Jim Nabors** (Alabama, 1951) was inducted into the Alabama State and Screen Hall of Fame in late April. He also appeared at Tuscaloosa's Mayberry Variety Show prior to the Hall of Fame dinner and still appears as a singer at casinos from time to time. He is scheduled to return to Tuscaloosa, Ala. in September to sing the national anthem prior to the Hawaii-Crimson Tide football game.



The following Chapter Eternal notices were received in the Central Office between February 7 and May 11, 2006.

**ALPHA**

Allegheny College

Arthur M. Crawford, 1934

Earle D. McCrea, Jr., 1939

**BETA**

Ohio University

Eugene R. Gyurko, 1950

Derek J. Buck, 1993

**GAMMA**

Washington & Jefferson College

Paul M. Offill, 1936

John C. Dodd, 1938

**DELTA**

University of Michigan

James R. Clancy, 1957

**EPSILON**

Albion College

David E. Braun, 1962

**ZETA**

Case Western Reserve

University

Harry S. Rogers, 1936

Robert J. Beasley, 1950

**IOTA**

Michigan State University

Jerry Still, Jr., 1957

**KAPPA**

Hillsdale College

Robert S. Whiting, 1950

**MU**

Ohio Wesleyan University

John C. McClure), 1939

Donald J. Shoemaker, 1950

**NU**

Lafayette College

Thomas S. Bishop III, 1934

Americo L. Forchielli, 1947

**UPSILON**

Rensselaer Polytechnic Institute

John H. Durgin, Jr., 1946

Emmett H. Mann, 1947

**CHI**

Kenyon College

Carl L. Glaser, 1954

**OMEGA**

University of Pennsylvania

Louis Schoenleber, 1942

**BETA ALPHA**

Indiana University

Albert W. Sahm, 1938

S. Hugh Dillin, 1936

**BETA BETA**

DePauw University

John D. Allan, Jr., 1927

Ronald E. Christman, 1969

**BETA DELTA**

University of Georgia

David T. Williams, 1972

**BETA EPSILON**

Emory University

C. W. Carey Moore, 1937

**BETA ZETA**

Butler University

George O. Browne, Jr., 1946

Mark D. Mylin, 1989

**BETA ETA**

University of Minnesota

Robert H. Owens, 1951

**BETA THETA**

University of the South

George H. Hamler, 1950

**BETA IOTA**

University of Virginia

Lloyd Curtiss, Jr., 1948

**BETA MU**

Tufts University

Elmer H. Smith, 1940

Hallard B. Kinnison, 1942

**BETA OMICRON**

Cornell University

E. Chatfield Blakeman, 1944

**BETA PI**

Northwestern University

Richard J. Wolf, 1955

**BETA RHO**

Stanford University

Merrill W. Morehouse, 1932

Rodell C. Johnson, 1937

Ernest H. Damarus, 1940

Robert C. Frojen, 1952

Frederick K. Kunzel, 1954

Jack E. Hatton, 1959

George L. Boynton, 1960

**BETA TAU**

University of Nebraska

Roland E. Arndt, 1956

Howard P. Metcalfe, 1966

**BETA UPSILON**

University of Illinois

Ogden A. Phipps, 1940

John J. McCune, 1954

**BETA PHI**

Ohio State University

William H. Adelberger, 1947

Frank J. Kalinowski, 1949

Charles E. Oliver, 1951

**BETA PSI**

Wabash College

Norman E. McDaniel, 1947

**GAMMA BETA**

Illinois Institute of Technology

Joseph A. Ransel, 1930

Raymond R. Bacci, 1937

Paul H. Adair, 1941

**GAMMA DELTA**

West Virginia University

Harry F. Bell, 1942

Harry W. Miller, 1952

James F. Sproul, 1953

Lorain S. Cornwell, Jr., 1953

Alfred S. Patty, 1974

**GAMMA ZETA**

Wesleyan University

Edward W. Roberts, 1945

Everett P. Skillings, 1951

**GAMMA THETA**

Baker University

L. Verle Wagner, 1931

David L. Quick, 1947

**GAMMA IOTA**

University of Texas

William C. Johnston, 1942

W. Price Lowry, Jr., 1949

Nathan R. Brandon, 1969

**GAMMA KAPPA**

University of Missouri

Soloman L. Connett, 1924

**GAMMA LAMBDA**

Purdue University

William "Dutch" Fehring, 1934

William F. Long, 1942

**GAMMA MU**

University of Washington

John W. Sill, 1946

**GAMMA NU**

University of Maine

Robert W. Harvey, 1938

Frederick C. Simpson, 1949

**GAMMA XI**

University of Cincinnati

Jack L. Reed, 1955

**GAMMA PI**

Iowa State University

Fred G. Siegrist, Jr., 1941

Walter F. Nadler, 1956

**GAMMA RHO**

University of Oregon

Kenneth M. Webber, 1938

**GAMMA SIGMA**

University of Pittsburgh

Jack C. Hill, 1937

Oliver C. Hurst, Jr., 1939

A. John Barilar, 1949

Thomas G. Strong, 1954

Roger H. Ahlers, 1959

**GAMMA TAU**

University of Kansas

Earl E. Robertson, Jr., 1950

**GAMMA UPSILON**

Miami University

Paul R. Glick, 1929

Norman G. Taylor, Jr., 1953

**GAMMA PSI**

Georgia Institute of Technology

James C. Thompson, 1931

Frank B. Thompson, 1931

Joseph H. Heard, 1956

William R. Watson III, 1955



**DELTA ALPHA**  
University of Oklahoma  
Dale E. Stauffer, 1952

**DELTA BETA**  
Carnegie Mellon University  
John E. Johnson, 1947  
James M. Haushalter, 1950

**DELTA GAMMA**  
University of South Dakota  
Ralph Laird, Jr., 1948  
John E. Hulse, 1955

**DELTA EPSILON**  
University of Kentucky  
Hon Marvin S. Talbott, 1948  
James E. Wessels, 1974

**DELTA ZETA**  
University of Florida  
James E. Grotke, 1958  
Kenneth G. Freas, 1965

**DELTA ETA**  
University of Alabama  
James D. Handley, 1959  
Everett L. Stewart II, 1962

**DELTA IOTA**  
UCLA  
William E. Worthington, 1937  
Matthew H. Mahana III, 1946

**DELTA KAPPA**  
Duke University  
Donald A. Farinella, 1951

**DELTA LAMBDA**  
Oregon State University  
Duane C. Lemley, 1950

**DELTA MU**  
University of Idaho  
Richard Phinney, 1940  
Robert M. Nelson, 1943  
Alan F. Huggins, 1952

**DELTA XI**  
University of North Dakota  
Gordon A. Senzek, 1952

**DELTA OMICRON**  
Westminster College  
Reynolds S. Hamlin, 1948

## Lewis: Owner, breeder of elite thoroughbreds

Bob Lewis (University of Oregon, 1946) known for his personality throughout the horse-racing world, passed away in February. He was 81.

He owned two horses that vied for the coveted Triple Crown after winning the first two legs of the three-race series. Silver Charm won the Kentucky Derby and Preakness in 1997 before falling short in the Belmont Stakes. Two years later, Charismatic also won the Derby and Preakness, but a life-threatening injury during the Belmont kept it from claiming all three titles. A third horse, Commendable, grabbed the Belmont Stakes title in 1998.

Mr. Lewis purchased his first horse in 1990 and, not long after, became a force in the industry. Aside from Silver Charm, Charismatic and Commendable, dozens of Lewis' horses had strong careers. Serena's Song holds the record among North American females with \$3.3 million in winnings and, in all, Mr. Lewis owned, was part owner or bred 57 stakes winners.

Mr. Lewis had a beer distributor and several automobile dealerships in Southern California. He also founded two medical facilities: a neuro-imaging center at the University of Oregon and a family-cancer treatment facility in California.

## Dillin: U.S. District judge known for civil-rights cases

Hon. Samuel Hugh Dillin (Indiana University, 1936) served a 40-year tenure as a U.S. District Court judge and made several rulings that brought out school desegregation and prison reform.

His defining decision came in 1981 when he ruled that thousands of black students from the Indianapolis Public School system should be bused to outlying school districts. He also ruled in 1998 to begin an 18-

year phase out of the program during which every year one fewer class of students would be bused.

Dillin, who retired in 2001, also desegregated Evansville, Ind., schools, opened a local plumbers union to blacks, ruled restrictions on liquor branding were legal and presided over nearly 400 claims following an explosion at the Indiana State Fairgrounds in 1963.

## Fehring: 'Flying Dutchman' starred at Purdue; longtime Stanford coach

William "Dutch" Fehring (Purdue University, 1934), a star athlete in the 1930s who had a successful college coaching career, died in April. He was 93.

Along with coaching legend John Wooden, Fehring helped lead the 1932 Purdue basketball team to a national championship. He also played football and baseball for Purdue. He played one game with

the Chicago White Sox in 1934 before becoming a career college coach. After starting as an assistant at Purdue, he found success at Stanford as the Cardinal baseball coach and still holds the record for most career victories (290) and victories in a season (36). He was inducted into the American Baseball Coaches Association Hall of Fame in 1973.

**DELTA PI**  
Southern California  
Norbert R. Lamoreaux, 1952  
Robert B. Avery, Jr., 1957

**DELTA OMEGA**  
Kent State University  
Donald C. Hambleton, 1954  
Wayne L. Alley, 1954

**EPSILON ALPHA**  
Auburn University  
James H. Morton, Jr., 1954  
Henry D. Gibb, 1968

**EPSILON BETA**  
Texas Christian University  
Emery Deaki, 1959

**EPSILON ZETA**  
Sam Houston State University  
Vernon R. Hutchinson, 1980

**EPSILON IOTA**  
Kettering University  
Charles E. Wing, 1950  
Ronald R. Jackson, 1974

**EPSILON LAMBDA**  
Texas A & M-Kingsville  
Gus J. Groos III, 1968

**EPSILON MU**  
Ball State University  
Allan L. Russell, 1982

**EPSILON NU**  
University of Missouri at Rolla  
John D. MacDonald, Jr., 1972

**EPSILON XI**  
Western Kentucky University  
Robert L. Proctor, 1949

## CHAPTER ETERNAL

*To notify the Fraternity of a member's death, please send an obituary notice, memorial service pamphlet or other written confirmation to Delta Tau Delta Fraternity, 10000 Allisonville Road, Fishers, IN, 46038-2008 or fax information to 317-284-0214.*



## BASKETBALL

Forward Kyle MacGillis, an All-Midwest Conference first-team selection, helped lead the Lawrence University basketball team to a 25-1 record and the NCAA Division III quarterfinals. He had a team-high 51 steals for the Vikings and ranked second in minutes played (792), scoring (346 points, 13.3 per game), rebounds (111, 4.3) and assists (99). Among his top games was a 27-point performance against Grinnell, 26 points versus Lake Forest and 25 points in the Wisconsin-Oshkosh game.

Two other Lawrence Deltas played for the Vikings this past year. Post player **Ben Klekamp**, scored 95 points (3.7 per game), and guard, played in 16 games.

Three Deltas were instrumental in Albion College's basketball team finishing 20-6. Guard **Zak Silas** earned All-Michigan Intercollegiate Athletic Association first-team honors and was MIAA Co-Player of the Week in early February. He was second in scoring (313 points, 12.0 per game) and steals (28) and third in assists (62) and minutes played (702). Silan sank 80.7 percent of his free-throw attempts (46 of 57) and pulled down 71 rebounds (2.7 per game). **Rick Palmer** earned All-MIAA honorable mention at guard after leading Albion in steals (29), ranking second with 84 assists and scoring 73 points. **Andrew Ruddick** saw action in 23 games.

Forward **Gary Simkus** was a leading player for the 16-10 Wabash College squad. He scored 197 points (5.6 per game), pulled down 87 rebounds (3.3 per game) and had 34 assists. **Landon Baize** led LaGrange College in assists with 71, was second in steals with 22 and added 58 points (2.2 per game.)

Kenyon College forward **Allen Bediako** ranked 24 in Division III with 58 blocked shots (2.2 per game) and was the team's top rebounder with 150 (6.3 per game). Against Allegheny, he had 18 rebounds, 10 points and eight blocks and finished the season with 100 points. Teammate **Jon Lawrence** played 16 games at forward.

**Floyd Morris** started every game for the 15-12 Stevens Tech squad and led the team with 109 assists. He was third with 634 minutes played and 26 steals. He also scored 103 points. Teammate **Stephen Peters** played in 26 contests at guard and scored 107 points.

DePauw University coach **Bill Fenlon** (Northwestern University, 1977) once again led the Tigers (15-13) to the NCAA Division III playoffs and now has a record of 335-214 in 21 seasons as a college head coach. **Scott Drew** (Butler University, 1993) completed his second

## UCLA coach earns 1,000th victory



UCLA Sports Information Department

**UCLA women's coach Andy Banachowski (UCLA, 1968) notched his 1,000-career victory during the 2005-06 season. In 39 years as the Bruins' head coach, he has led UCLA to six national titles and is only the second NCAA Division I volleyball coach with 1,000 or more victories. In 1997, he became the first women's coach inducted into the National Volleyball Hall of Fame. Banachowski's 2006 team finished with a 20-11 record, including a trip to the NCAA Division I tournament where it played before an NCAA record crowd of 14,489.**

**Banachowski became acquainted with competitive volleyball during his freshman year at UCLA. He played with other members of the Delta Iota Chapter in the backyard of the shelter and as a member of the chapter's intramural squad. He tried out for the UCLA varsity squad as a sophomore and improved to the point that he earned All-American honors as a senior.**

**"Volleyball is a big part of who I've become, and I can't imagine doing anything else but coaching," he said. "I've come to appreciate I can impact people's lives more, and I love to see former players making their mark."**

year as head coach at Baylor University. **Heath Glick** (Emory University, 2001) spent his second year as director of basketball operations at Florida International University. **Todd McGuinness** (Bethany College, 2002) finished his second season as an assistant coach for the Vassar College men's team. **Nevada Smith** (Bethany College, 2002) completed his first season as an Allegheny College assistant coach.

## SWIMMING

Three Delt All-Americans led Kenyon College to its 27th consecutive NCAA Division III national championship and eighth consecutive North Coast Athletic Conference title. **Joey Gosselaar** won the NCAA 200-yard breaststroke event (2:01.57), placed fifth in the 100-breast stroke (56.51) and was 10<sup>th</sup> in the 200-individual medley (1:53.22). He also won the NCAC title in the 200-breast stroke. **Eric Dunn** won the NCAA 1,650 freestyle title (15:22.21), placed fifth in the 500-freestyle (4:31.65) and had ninth-place finishes in the

400-individual medley and as a member of the 800-freestyle relay team. At the NCAC meet, he won the 500-freestyle and 800-freestyle relay, placed second in the 1,650 freestyle and was third in the 400 IM. **Alex Stoyel** also earned All-American recognition at the Division III meet with eighth-place finishes in the 100-breast stroke (57.20) and 200 breast stroke (2:04.80).

Denison's **Gregg Parini** (Kenyon College, 1982) earned the Men's Coach of the Year honor at the Division III awards ceremony. He coached his team to a second-place finish behind Kenyon. In his 19<sup>th</sup> season at Denison, he also coached the women's team to a sixth-place finish at the NCAA meet.

Illinois Institute of Technology's **John Groszko** placed 18th in both the 200-back stroke and 500 freestyle at the NAIA national championship meet.

Seven Wittenberg University Deltas competed at the NCAC meet, with three of the men standing out. Co-captain **Matt Reiss** had fourth-place finishes with the 200- and 400-



medley relay teams, finished sixth with the 800-freestyle relay squad, eighth in the 100-breast stroke and ninth in the 200-breast stroke. **Jeff Smith** was on the fifth-place 200-freestyle relay team and finished 16<sup>th</sup> in the 1,650 freestyle. **Jordan Brown** was 12<sup>th</sup> in the NCAC 200-breast stroke and 14<sup>th</sup> in the 100-breast stroke.

Two Wabash Delts also competed at the NCAC meet. **Zach Manker** finished third with the 800-freestyle relay team and 17<sup>th</sup> in the 200-freestyle with a season-best time. He also had season-best times in the 500- and 1,000-freestyle events. Teammate **Mitch Palmer** competed in the 200-back stroke at the NCAC meet.

**Chad Bartko** of Case Western Reserve University competed at five freestyle distances (100, 200, 500, 1000 and 1,650) and the 200 backstroke.

## WRESTLING

With his second-place finish at the NCAA Division I tournament, 174-pounder **Jake Herbert** of Northwestern earned All-American honors and finished the season with of record of 36-1. He set a school-record with 42 consecutive victories (over two seasons) and, in the NCAA second round, pinned his opponent in 17 seconds, the fastest fall in school history. Among the tournaments he won were the Big Ten meet, the Reno Tournament of Champions, the NWCA/Marines All-Star Classic and the Midlands Championship, where he won the Champion of Champions Award.

Teammate **Brandon Lozdoski** posted a 7-7 record at 149 pounds and Nick Hayes was also on the Wildcats squad.

**Garrett Pino** of Wabash College competed at the NCAA Division III meet and advanced to the fourth round of the consolation bracket. He started the season at the 133-pound division and moved up to the 141-pound weight class late in the season. Garrett won the 141-pound title at the Midwest Regional prior to the NCAA meet. **Rob Arnett** finished 4-5 at 285 pounds for Wabash.

Other Delts who wrestled this year included: **Scott Doerr** of Duke University, **Greg Wellman** for MIT and **Geoff Protz** of Case Western Reserve University.

## HOCKEY

Delts once again dominated the Lawrence University team with 17 slots of the Vikings' roster taken by members of the Fraternity.

Goalie **Andrew Isaac** earned an All-

Midwest Collegiate Hockey Association first-team selection after posting a 3.86 goals against average with 593 saves in 1,073 minutes. Defenseman **Josh Peterson** accepted an All-MCHA first-team selection and earned a spot on the All-MCHA Academic All-Star Team. He scored 17 points on four goals and 13 assists. Captain and forward **Joe Searl** led the Vikings with 25 points (nine goals, 16 assists.) Assistant captain and forward **Mason Oakes** (seven goals, six assists), goalie **Daniel Ljung** (324 saves) and forward **Brian Kennihan** were named to the All-MCHA Academic Team.

**David Olynyk** led the Vikings with 11 goals and tied for second with 23 points. Assistant captain and defenseman **Pete Mossberg** also finished with 23 points (10 goals, 13 assists) and forward **Neil Wallace** had 17 points (nine goals, eight assists). Other major contributors included defenseman **Mitch Sabo** (seven goals, three assists), defenseman **Adam Brand** (eight points), forward **Charlie Ward** (six points) and defenseman **Blake Royle** (five points).

Four Delts contributed to the 9-5-5 MIT season. Forward **Roger Ballentine** finished second on the team with 34 points (14 goals, 20 assists). Defenseman **Nicholas Maietta** led the team with 21 assists and added eight goals. Forward **Brian LaCrosse** scored 16 points (five goals, 11 assists) and forward **Nicholas Leeper** also played for the Engineers.

## BASEBALL

Four Delts play key roles with the Arizona Diamond Backs. Outfielder **Shawn Green** (Stanford University, 1996) enters his 14<sup>th</sup> season in the major leagues and works with **Mike Aldrete** (Stanford University, 1983) who begins his second season as the club's hitting coach. Recently retired catcher **A.J. Hinch** (Stanford University, 1996) is the team's manager of minor league operations and **Scott Kelley** (University of Arizona, 1997) is the club's ticket manager.

Pitcher **Mike Mussina** (Stanford University, 1991) of the New York Yankees started his 16<sup>th</sup> major league season with 224 career victories, sixth among active pitchers, and 2,400 career strikeouts. The third Delt playing in the majors this season is pitcher **Rick Helling** (Stanford University, 1995) of the Milwaukee Brewers who is in his 12<sup>th</sup> season overall.

**Javair Gillett** (DePauw University, 2001) began his second season as the Tigers' strength and conditioning coach. He spent one year as the organization's minor league strength and conditioning coordinator.

Second baseman **Jed Hansen** (Stanford University, 1994) remains in professional baseball. He started the season, his 14<sup>th</sup> in pro ball, with the Fresno Grizzlies of the Triple A Pacific Coast League. Third baseman **Brian Dallimore** (Stanford University, 1996), who had been in the majors the past two seasons, retired prior to the start of spring training and **Branch Rickey III** (Ohio Wesleyan University, 1967) continues his work as the Pacific Coast League president.

## HONORS AND AWARDS

Texas Christian University athletic trainer **Chris Hall** (West Georgia College, 1982) received the Athletic Training Service Award from the National Athletic Trainers Association this spring. He is in his 21<sup>st</sup> year as a member of the TCU athletic department and has been head trainer for three years.

## WHERE ARE THEY NOW?

Here is an update on six men who played baseball for a university in what is now the Big 12 Conference:

- Outfielder **Ron Bandy** (University of Texas, 1965) has been a product manager for The Eads Company of Houston the past eight years.
- Catcher **Bill Berryhill** (University of Texas, 1973) is an orthopedic surgeon in Woodway, Texas.
- Catcher **Kay Cohlma** (University of Oklahoma, 1968) has been involved in the retail clothing business for 30 years and is the owner of Wooden Nickel, which carries young men and women's sportswear, in Stillwater, Okla.
- Outfielder **Gary Long** (Texas Tech University, 1977) has served as the superintendent of the Goldthwaite, Texas, Independent School District since 2004.
- Pitcher **Mike Pfautsch** (University of Missouri, 1981) has been an American Family Insurance agent for 24 years and runs his own agency in Shawnee Mission, Kan.
- Outfielder **Ronnie Rowell** (University of Oklahoma, 1969) has been senior director for school governance at the Texas Education Agency in Austin, Texas, since 1999.

---

*Delt Spotlight is compiled by Joseph H. "Jay" Langhammer Jr. (Texas Christian University, 1966). Sports or entertainment news should be e-mailed to [jlangeh132@aol.com](mailto:jlangeh132@aol.com). To read more about Greeks in entertainment and sports, go to the North-American Interfraternity Conference website at [www.nicindy.org](http://www.nicindy.org) and click on "Who's Greek."*



# 2006 Brickyard Karnea on record attendance pace

Register for event and reserve hotel room by June 30 to save nearly \$800

Registrations for the 2006 Brickyard Karnea set an early pace to possibly make this year's Karnea the largest ever.

As of May 19, 340 Delt alumni and undergraduates, along with their family members and friends, confirmed their intention to attend the "Greatest of All Delt Events." That equals nearly half of the final attendance mark at the 2004 Denver Karnea of 722.

Register by June 30 and save \$30 off your registration. Also, make sure to reserve a hotel room before July 5 to save \$185 per night and, maybe more importantly, secure a room in Indianapolis. Vacancy at hotels throughout the metro area is limited because of NASCAR's All-State400 at the Brickyard.

Become a part of what's shaping up as the largest gathering of Delts ever. Go to [www.delts.org](http://www.delts.org) for more information, to register for Karnea and to make your hotel reservations.

## 2006 Brickyard Karnea FAQ

**When is Karnea?** August 2-6  
**Where is Karnea?** Indianapolis

### REGISTRATION FEES

**How much does it cost for UNDERGRADUATES?** \$319 through June 30; \$349 after June 30

**How much does it cost for ALUMNI AND GUESTS?** \$359 through June 30; \$389 after June 30

**How much does it cost for CHILDREN 12-YEARS-OLD and YOUNGER to attend Karnea Kamp?** \$239

**How do I register?** Register online at [www.delts.org](http://www.delts.org)

### Hotel information

**At what hotel is Karnea?** Indianapolis Marriott Downtown

**How much are rooms?** Room rates are \$144 plus tax per night if reserved before July 5.

**How do I reserve a room?** Go to [www.delts.org](http://www.delts.org) or call 877-640-7666 and mention Delta Tau Delta before July 5 to reserve a room at the special rate.

**Where do I get more information?** Go to [www.delts.org](http://www.delts.org)

Editor's note: This is the fourth in a series of four reproductions of articles written about the 1929 Karnea. The cartoon first appeared in the June 1929 issue of *The Rainbow* and the article "Again — Welcome" first appeared in the September 1929 issue. "The Greatest of all Delt Events" returns to Indianapolis Aug. 2-6, 2006.



## Again — Welcome

For the fifth time in the history of the Fraternity, Indianapolis extends a cordial hand of welcome to Delta Tau Delta.

A few old timers may recall the Karneas of 1883, 1893 and 1895. (Gluttons for punishment, they were, to hold two successive conventions). More Delts, not so old, remember the good times of the 1913 Karnea.

This is the Golden Karnea. Hoosier Delts have been working for two years in an effort to make it an outstanding meeting, commemorative of the Fraternity's seventy years of existence. We hope to make this fiftieth Karnea the granddaddy of 'em all. And we hope we get our hope.

Our crew is composed of Beta Alpha, Beta Beta, Beta Zeta, Beta Psi and Gamma Lambda undergraduate chapters and the Indianapolis alumni association. To this group is due any bouquets or irish confetti which our guests may see fit to confer.

The Golden Karnea is yours. Fill your gizzard with all the Hoosier hospitality you can absorb and take away with you. The cake is cut. Help yourself.





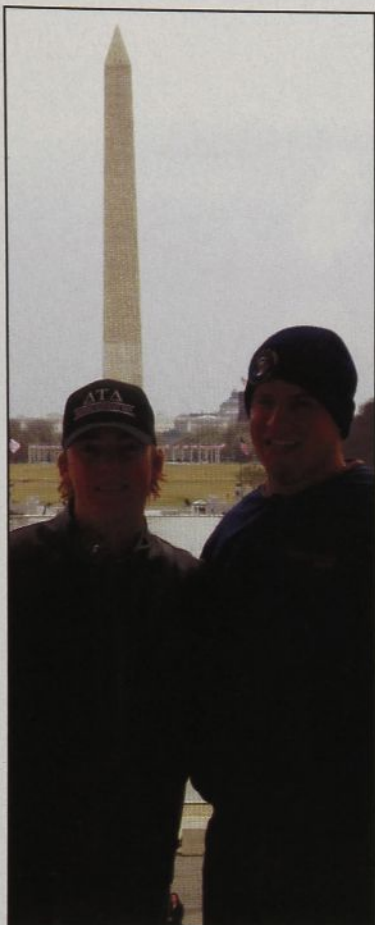
# BRICKYARD KARNEA



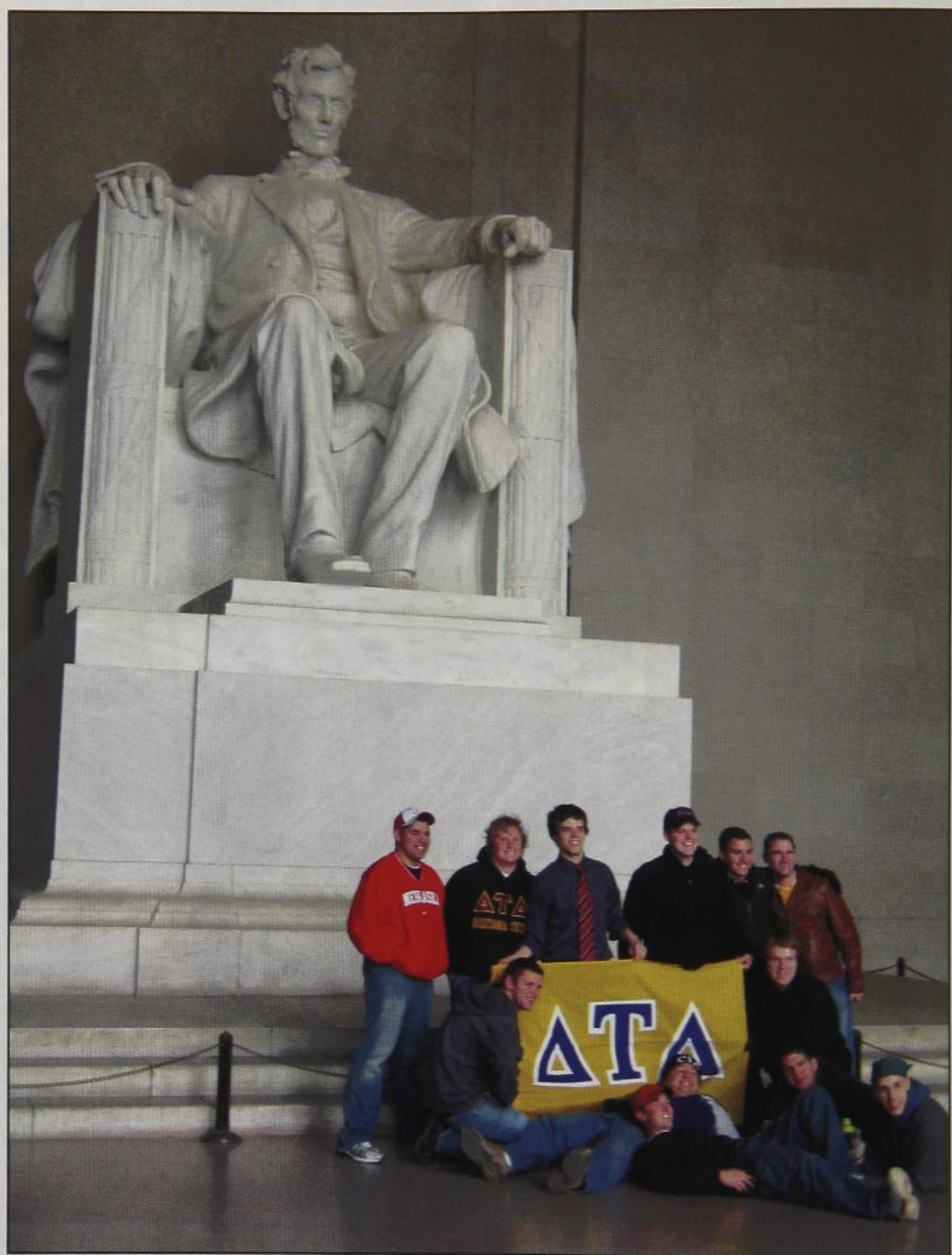
Indianapolis, Indiana • August 2-6, 2006 • Marriott Downtown



# Capitalizing on aura of leadership in D.C.



The Lincoln Memorial (right) was just one of several locations used to highlight the Fraternity's foundation of Truth, Courage, Faith and Power. Paul Newton (left) and Aaron Young, both of Western Kentucky, take time to pose with the Washington Memorial in the background. Twenty-six men from 19 chapters attended the inaugural Capital Leadership Academy.



## Delta Tau Delta holds inaugural spring break leadership academy in nation's capital

When the Fraternity decided to hold one of its annual leadership conferences during the spring, the search for the perfect backdrop for the inaugural spring break event did not last long.

Twenty-six undergraduates spent March 16-20 in Washington, D.C. immersed in the environment of the nation's capital. They learned about how the principles of the

United States relate to Delta Tau Delta and powerful leadership skills.

The Capital Leadership Academy centered on visits to the Supreme Court, World War II Memorial, National Cathedral and Capitol Building. At each stop, the men held a discussion about the Fraternity's principles – Truth, Courage, Faith and Power – and how to incorporate those principles into their chap-

ter operations and daily lives.

When not learning at the base of some of the most important structures in the nation, the undergraduates studied Stephen R. Covey's *Seven Habits of Highly Effective College Students*.

The following are some of their thoughts about the inaugural Capital Leadership Academy:



"The Academy gave me an opportunity to explore D.C. for the first time and meet brothers from across the nation. The knowledge about leadership and personal development will develop me as a leader for the rest of my life. Truth, Courage, Faith and Power all have a new meaning, and I will always remember our discussions with the images of national monuments."

— Jack Scholz, sophomore political science major, Chapman University

"The Capital Leadership Academy: our four fundamental principles take on the most powerful city in the world. You haven't seen anything like this before."

— Jameson Root, junior, business management major, Case Western Reserve University

"The Capital Leadership Academy has changed my life. I now have the organizational and planning skills to be successful at the next level in my life. The success of the leadership academy will heighten my level of effectiveness far beyond the years of college."

— Aaron Young, junior, political science and economics major, Western Kentucky University

"The Academy was a remarkable experience to explore our nation's capital and see everything Washington D.C. has to offer from the multitude of memorials, to the Capitol Building, the White House, the National Archives, the National Cathedral, the Holocaust Museum and so much more. It was especially great to incorporate the Delt values with many of the sites. But better than anything was the brotherhood and getting to meet Deltas from across the country."

— Rick Beitman, junior, political science and French major, Arizona State University

"The Capital Academy was awesome. It was a really great environment in which to learn a lot about myself. This training is not only useful back at my chapter, but will no doubt benefit me for the rest of my life."

— John Baker, junior, mechanical engineering major, Oklahoma State University

"Joining Delta Tau Delta Fraternity turns good guys into great men. Attending a Delta



**2006 Capital Leadership Academy participants**

Aaron Young Western Kentucky	Tony Baranowski Nebraska-Kearney	Wilson Cluney Chapman	Steven Golden Case Western
Jeffrey Schwartz Texas	Blake Hovander Arizona State	Grady Phelan Oklahoma State	Jack Scholz Chapman
Zach Sweeney Nebraska-Kearney	Jameson Root Case Western	Alan Duncan Alabama	Kyle Kunkler Albertson
John Groszko IIT	Craig Winkler Texas A&M	Ashley Wollam Marietta	Paul Newton Western Kentucky
Matt Mutarelli Moravian	Chris Barcelona SE Louisiana	Kyle Horst Chapman	Rick Beitman Arizona State
Andrew Moriarity Wisconsin	Clif Rateike Butler	Jason San Souci Eastern Michigan	Joe Sciarino American
	Dave Sullivan Cincinnati	John Baker Oklahoma State	

Tau Delta Leadership Academy turns great men into excellent leaders."

— Craig Winkler, sophomore, biomedical sciences major, Texas A&M University

"The Capital Academy was a great experience. The curriculum was very helpful, and it was great getting to visit and tour the D.C. area."

— Paul Newton, junior, photojournalism major, Western Kentucky University

"I never would have expected I could learn so much about myself by touring a city with 25 other guys. If it were up to me, I would do this every year. Amazing. Phenomenal. Life-changing. More than ever, I'm glad to be a Delt."

— Ashley Wollam, sophomore, English/communications major, Marietta College

"The Academy was really a once-in-a-lifetime

experience, a thought-provoking weekend. I learned things at the Academy I probably would never have been exposed to before."

— Matt Mutarelli, junior, business management major, Moravian College

"Imagine a room full of current and upcoming leaders on their respective campuses and their own chapters...a group of men who all have one common interest – bettering themselves and brothers they care for so much."

— Christopher A. Barcelona, sophomore, history major, Southeastern Louisiana University

"Attending the Capital Leadership Academy is probably the best decision I have made in college. The lessons I learned at the academy are something that I will never forget."

— Alan Duncan, junior, accounting major, University of Alabama



# Attendance at events continues to grow



**Alumni from several schools gathered March 10 for the inaugural Tampa Golf Tournament, one of several Foundation events this spring.**

## Five spring gatherings in Florida, National Capitol Alumni Meeting draw hundreds

With the ever-growing interest among alumni in Delta Tau Delta, organizers are finding that the more unusual the event, the better.

The spring of 2006 was no exception. The secret to each of these events was a local alumnus who played the key role in making sure people were aware of what was happening. Alumni events included golf outings, receptions in Delts' homes, luncheons at clubs and formal banquets. No matter the theme, the spirit of the Fraternity was the same.

Two events this year doubled in size — the Vero Beach reception and Boca Raton alumni reception — and the camaraderie ran very high at all spring events. The following were the 2006 events:

- 23rd Naples Rally, March 7, Vasari Country Club
- Inaugural Tampa Golf Tournament, March 10, Rocky Point Golf Course
- 2nd Tampa Alumni Banquet, March 10, University Club
- 3rd Boca Raton alumni reception, March 14, Home of Richard Stark
- 2nd Vero Beach reception, March 16, home of Norval Stephens



**Alumni from the Beta Beta Chapter had the most alumni at the Naples Rally. The seven men enjoyed talking about their days at DePauw University in Greencastle, Ind.**

- National Capitol Alumni Meeting, April 26, Capitol Hill

For alumni who live at a different winter location, make sure the Foundation has your alternate addresses so you can get the information on any Delt gatherings in your areas.

A highlight at each event was hearing from

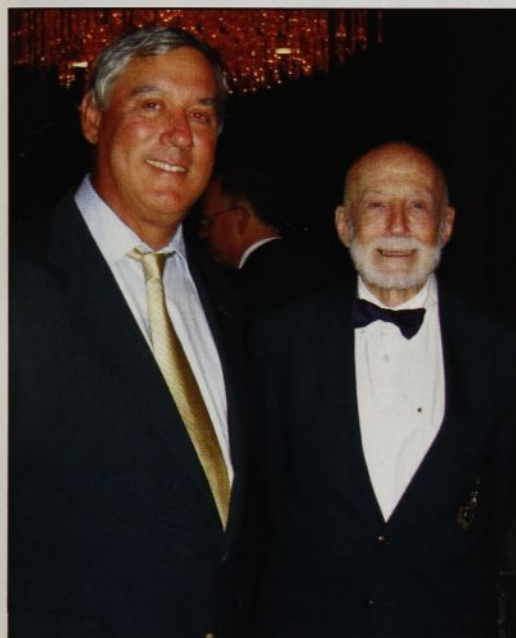
either Foundation Chairman Norval Stephens, or Fraternity Executive Vice President Jim Russell on the state of the Fraternity and plans for the future.

The Foundation anticipates similar events during 2007. If you're interested in attending, contact the Foundation at 888-383-1858.





**John Temple (Washington, 1959) on left, and John Fetters (DePauw, 1950) enjoy the Boca Raton reception.**



**Boca Raton reception host Richard Stark (Iowa State, 1971), on left, stands with Grady Drake (Florida, 1944), the newest member of the Bethany Society.**



**Larry Bryan (Kentucky, 1968), far left, joins Rose and Jim Roberts (Georgia, 1969) at the Vero Beach, Fla. event. The Vero Beach reception doubled in size from the previous year.**

## Three of Fraternity's top seniors earn Foundation scholarships

Dufour receives 2006 File Scholarship and Award for Excellence

The Delta Tau Delta Educational Foundation is pleased to announce Damien D. Dufour, Sam Houston State University 2006, as the recipient of the 2006 File Scholarship and Award for Excellence. Dufour served as Epsilon Zeta's sergeant at arms, recruitment chair, a member of the Ritual team and helped organize the chapter's philanthropic activities. A member of the football team, he received the Outstanding Student Athlete Award and graduated in May with degrees in finance and banking. Within his community, Damien helped organize the Toys-for-Tots drive and was the organizational chair for the commercial lending club at Sam Houston State.



**Damien Dufour**

Dufour plans to attend law school and eventually practice law in the Houston area. He attributes his work ethic, passion for banking and finance, and drive to maintain a high academic standard to a period in his life when he witnessed close family members fall on difficult financial times and his belief in the mission and values of Delta

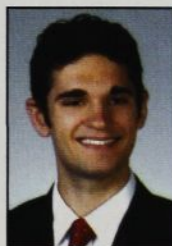
Tau Delta.

Gary L. Payne, general business and finance lecturer at Sam Houston State University, said in addition to Dufour's excellent academic record, he demonstrated considerable professional and leadership skills. "It is a rare student indeed that is able to win accolades as an outstanding student athlete, work as a credit analyst and maintain an extraordinarily high grade point average," Payne said.

Established in 1996, the File Scholarship and Award for Excellence recognizes individual efforts of excellence and superior academic achievement and is named for current Foundation president, Kenneth A. File (Kansas State, 1981). For more information on this and other scholarship opportunities through the Delt Foundation, please contact us at 888-383-1858 or the Foundation Web site at [www.deltfoundation.org](http://www.deltfoundation.org).

Darrow, Fernandez named 2006 Gustafson-Johns Scholars

Cory J. Darrow (Case Western Reserve, 2006) and Peter M. Fernandez (Duke, 2006) received the 2006 Ned H. Gustafson/Kevin R. Johns Scholarship. Senior, junior and sophomore members of the Fraternity who have displayed outstanding leadership skills at their chapter, on campus and in the community are eligible for the award.



**Cory Darrow**

Darrow recently graduated from Case Western where he was a member of the Zeta Chapter. He served as community service and philanthropy chair, corresponding secretary and chapter president. Outside of the chapter, he volunteered at the Free Clinic of Greater Cleveland and taught high school students how to lead healthier lives.

As a freshman, Darrow was elected vice president of his residence hall, which eventually led to his service as a resident assistant. He also served as a freshman peer mentor and worked with four freshmen from their first day until the end of their first year. Darrow will attend medical school and attributes the Fraternity's values statement as a guide to succeed in his chosen profession.



**Peter Fernandez**

Peter M. Fernandez graduated in May from Duke University where he was a member of the Delta Kappa Chapter. He is a founding father of the chapter, an active participant in the Adopt-A-School program and served as chapter president. Fernandez said his involvement in the re-colonization of Delta Kappa was his most important contribution to the community and university. He said the chapter is an instrument of social change on Duke's campus, establishing a series of events with the goal of ending racial segregation in Duke's social scene.

Fernandez plans a move this summer to San Francisco where he will work for Bain & Company, a management consulting firm, and continue his training in Brazilian Jiu-Jitsu and volunteering for nonprofit organizations.



# CENTRAL COURTYARD BRICKS AND MEMORIALS

The following have purchased bricks from January 1 to April 20, 2006. The first name is of the person being honored and the second name is of the person making the gift.

## In Memory Of:

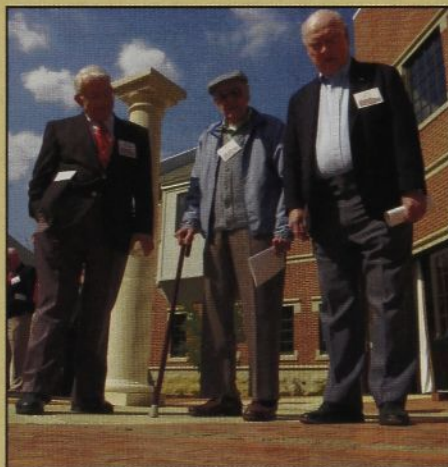
John Robert Bourne, Zeta Chi  
Zeta Chi Chapter  
Greg Best, Gamma Theta, 1983  
Michael Dizney  
Bob Carlisle, Iota Delta  
Dustin A. Gorder  
Suzie Chase  
Ralph K. Chase  
John S. Greenleaf, Gamma Beta, 1925  
John E. Greenleaf  
King A. Koch, Gamma Lambda, 1942  
Peter F. Koch  
George O. Nichols, Omega, 1936  
John G. Nichols  
William Tate, Beta Delta, 1924  
Girard N. Campbell

## In Honor Of:

The Alpha XI Pledge Class ZP  
Andrew Zalon  
Beta Tau Chapter  
Beta Tau Chapter  
Iota Zeta Chapter  
Cyrus Mostaghim  
1983 Pledge Class, Beta Beta  
J. T. Charles  
Beta Pi and Brothers  
Edward Bryant, Jr.  
Girard N. Campbell, Beta Delta, 1952  
Jack Hodges, Beta Delta, 1956  
Ronnie Payne, Beta Delta, 1953  
William Clemence  
George A. Cottrell, Beta Zeta, 1959  
Robert W. Stevens  
Christopher Hayden Mickel  
P. Chris Mickel  
Edward Snider, Zeta Beta, 1973  
Roary Snider  
Lucian R. Smith, Jr., Delta Delta 1941  
Richard L. Smith

## Personal Bricks

Chris Barcelona, II, Epsilon Phi, 2008  
Stephen Bleh, Gamma Xi, 2008  
Matthew E. Boe, Zeta Chi, 2004  
Charlie Braun, Iota Theta, 2007  
Anthony G. Camarena, Gamma Pi, 2006  
Adam Casey, Iota Theta, 2006  
William Clemence, Beta Delta, 1954  
Orville E. Cote, Theta Lambda, 2006  
Thomas A. Cotton, Iota Theta, 2007  
Richard Cregar, Iota, 1958  
Damien R. Euell, Theta Omicron, 2006  
Joshua R. Gross, Beta Beta, 2001  
Larry L. Herb, Omicron, 1965  
W. Andrew Hoffman, IV, Delta Kappa, 2008  
Andy House, Delta Omicron, 2009  
Matt House, Delta Omicron, 2006  
Christopher Hyde, Epsilon Alpha, 1996  
Antonio Inciriaga, Beta Psi, 1994  
Bradford Barry Johnson, Zeta Tau, 2007  
Peter F. Koch, Beta Upsilon, 1952  
Jeffery M. Keysear, Zeta Chi, 2006  
Cole A. Kopacek, Gamma Pi, 2004  
Felix Youlin Li, Delta Kappa, 2007  
Nigel Manick, Theta Lambda, 2003  
Joshua McAdams, Zeta Sigma, 2006  
Matthew McSweeney, Gamma Pi, 2004  
Taffar Mizell, Iota Theta, 2009



Mark Mizelle, Iota Theta, 2006  
Kirk P. Morales, Theta Gamma, 2009  
Shawn Mullins, Delta Omega, 2009  
Drew Nelson, Epsilon Alpha, 2006  
John G. Nichols, Beta Alpha, 1940  
Bryce Olson, Theta Omicron, 2008  
Trevor Ott, Zeta Chi, 2008  
Dane Pearson, Epsilon Beta, 2008  
Jack Pecaut, Beta Kappa, 1957  
Jeffrey Pelletier, Beta Phi  
Max Recker, Delta Omega, 2009  
Paul Rosetti, Delta Omega, 2010  
Mitchell Seaburn, Delta Omega, 2009  
Carl Seitz, Delta Omega, 2009  
Richard L. Smith, Delta Delta, 1949  
Roary Snider, Zeta Omicron, 2006  
Tommy Sprague, Iota Theta, 2005



Robert P. Valente, Theta Tau, 2004  
Jonathan Wagner, Iota Theta, 2007  
Brian Weatherup, Theta Zeta, 1999  
Charles Wehr, Delta Kappa, 2008  
Bradford S. Worley, Gamma Xi, 2009



# BE A PART OF DELT HISTORY

## A PERMANENT PLACE IN DELT HISTORY

For a tax-deductible gift of only \$250, you, and those you honor, can be a part of Delta Tau Delta history forever.

NAME OF INDIVIDUAL ORDERING BRICK \_\_\_\_\_ PHONE NUMBER \_\_\_\_\_

STREET ADDRESS \_\_\_\_\_

CITY \_\_\_\_\_ STATE \_\_\_\_\_ ZIP \_\_\_\_\_

CHAPTER (IF YOU ARE A DELTA) \_\_\_\_\_ GRADUATION YEAR \_\_\_\_\_

Please send acknowledgement of my honorary or memorial gift to:

NAME OF INDIVIDUAL TO RECEIVE ACKNOWLEDGEMENT \_\_\_\_\_

STREET ADDRESS \_\_\_\_\_

CITY \_\_\_\_\_ STATE \_\_\_\_\_ ZIP \_\_\_\_\_

### Gift Payment

Total number of gifts/bricks ordered @ \$250 each \_\_\_\_\_

☐ Please charge my gift to ☐ VISA ☐ MC ☐ Discover

Expiration Date \_\_\_\_\_ Three digit security code \_\_\_\_\_

Account Number \_\_\_\_\_

Signature \_\_\_\_\_

TOTAL AMOUNT DUE \_\_\_\_\_

☐ My check for the total is enclosed (Make check payable to Delta Tau Delta Educational Foundation.)

☐ I prefer to make five equal payments of \$50, the first of which is enclosed. Please send second reminder on \_\_\_\_\_; third reminder on \_\_\_\_\_; fourth reminder on \_\_\_\_\_; and fifth reminder on \_\_\_\_\_.

Indicate how you would like your brick inscribed (three lines):


## YOU COULD MAKE A VERY SPECIAL GIFT...

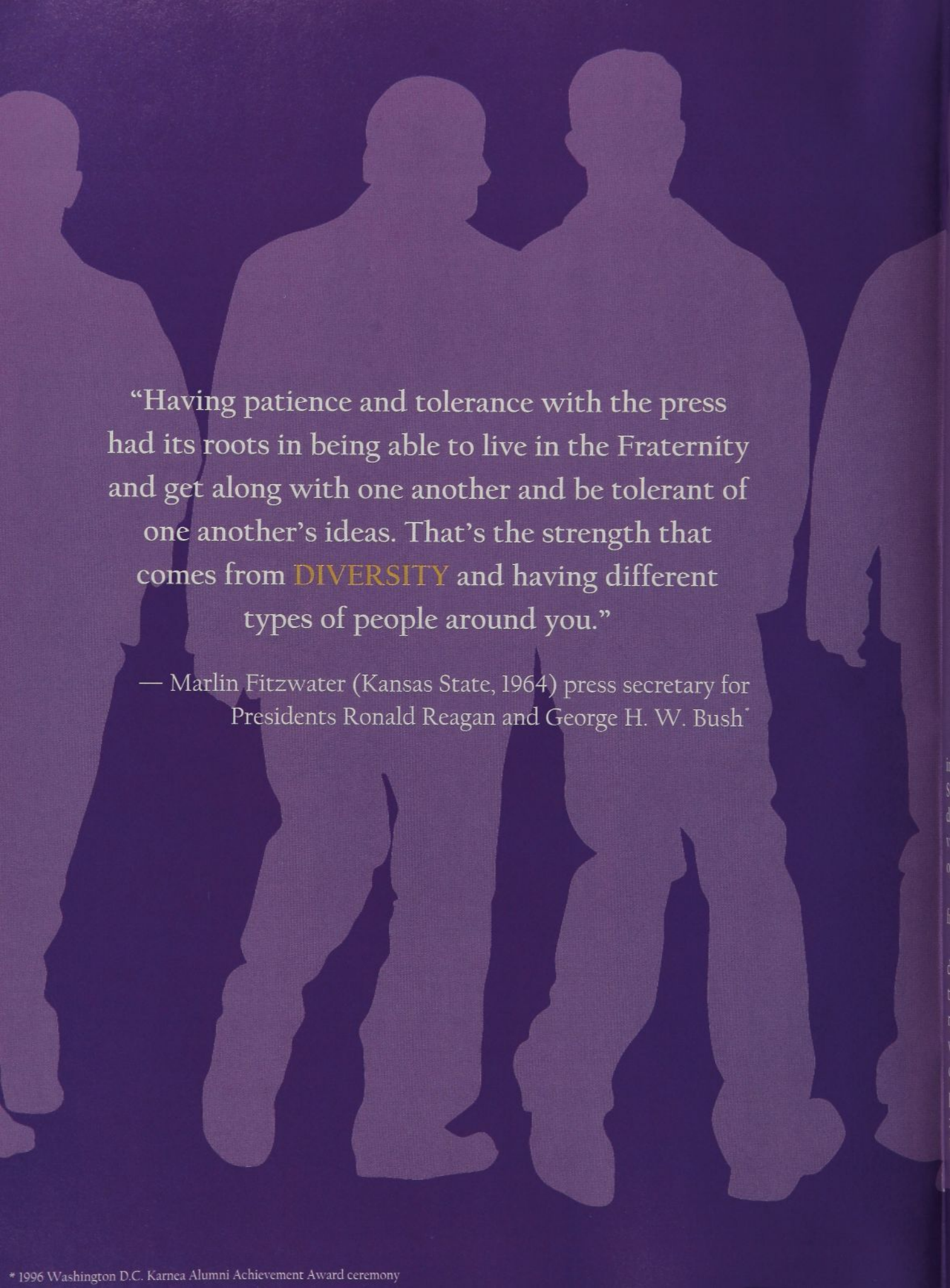
...if you buy a personalized brick in the Fraternity's Central Courtyard. Each person giving a gift of \$250 or more will have a brick inscribed and placed in the Central Courtyard. You may make a gift on behalf of yourself or in honor or memory of someone. Each beautifully inscribed brick will be personalized to your specification; three lines — with up to 18 characters per line, including spaces — are available.

What a great way to also honor a Delt husband, father, grandfather, son, uncle, nephew, friend or pledge brother. A limited number of bricks are available. You will receive a letter of acknowledgement with the text of your inscription. Please return the brick reservation form with your gift today.

Bricks ordered by March 1, 2007 will be installed in spring 2007.







“Having patience and tolerance with the press had its roots in being able to live in the Fraternity and get along with one another and be tolerant of one another’s ideas. That’s the strength that comes from **DIVERSITY** and having different types of people around you.”

— Marlin Fitzwater (Kansas State, 1964) press secretary for Presidents Ronald Reagan and George H. W. Bush\*



# Delts define diversity



**By Carl Brantley**

Diversity is the key to the growth of Greek life in the universities and colleges across the United States. If we, as Greeks, do not look for ways to diversify our chapters, we will become less relevant to college students and afford fewer growth opportunities for our members in the future.

My definition of diversity might be different from yours and that's OK.

Diversity for me is the opportunity to introduce new ideas and perceptions into our chapters. The main objective should be bringing in new people to our movement who might not want to join today because of the misperceptions of Greek life they have. We have to prove to the public that we are not drinking clubs or organizations where scholarship and leadership take a back seat.

We are seeing the influx of ethnic-based Greek organizations – such as Asian and Hispanic – at many campuses across our country. We are see-

ing more leadership clubs being formed at colleges and universities in response to students seeking venues where they can grow as leaders. We are seeing more older students going back to college after serving our country in the military or other service organizations. If we do not seek out these people and offer them the opportunities for leadership, scholarship and brotherhood that we have, we will miss the chance to steer our Fraternity into the next generation as a leader of student organizations rather than follower.

Just as the make-up of college students is different today than it was when many of our alumni were in school, it will be very different in the years to come. Let's equip our men and chapters with the best tools to recruit, develop and retain the college men of the future and have our chapters mirror the great melting pot that is America.

*Carl Brantley (Georgia Southern, 1975)  
was elected to serve as Delta Tau Delta's  
47th international president at the 2004 Karnea.*



# Recruitment model provides strength

By Nick Goldsberry

Too often recruitment consists of chapters reaching out to men only during the lead-up to the next pledge class and that outreach typically extends only to known commodities.

But sometimes the best prospective fraternity member sits next to a Delt in a sophomore-level English class or biology lab. He has intelligence, participates in several intramural sports, serves as a leader in numerous clubs and activities and works with charitable organizations. He is the kind of person who will influence every organization he works with throughout his life.

Delta Tau Delta will not be one of them.

Why? Probably because his shyness appeared not to reflect typical "Delt material," so he was never encouraged to rush.

"Delt material" includes intellectual strength, moral superiority and a heart dedicated to loyalty, generosity and service. Who possesses these characteristics? What does he look like? History has proved one thing – ideal Deltas come from various backgrounds, families, religions, races, political parties and social groups.

At the Georgia Southern colonization this spring, 28 men pledged to re-colonize the Epsilon Omega chapter. These men didn't appear unexpectedly. Many of them did not approach the Fraternity.

All expansion projects start with meeting top university officials. The expansion team and officials discuss the Fraternity's intended outcome of the project: establishing a chapter filled with members committed to academics, service and leadership. The team then asks the officials what men they know have those characteristics. The answers form a referral-based recruitment process.

Existing chapters and colonies should consider following this plan to recruit. Through this method, expansion projects get men with drive, determination and previous success. They are academically inclined, morally fit and ready for a challenge.

A secondary benefit is a more diverse group of men. Since 2000, 609 men served as founding fathers at Delta Tau Delta colonies. Those men represent an array of socio-economic and racial backgrounds, differing sexual orientations, political beliefs, religious ideologies and disabilities.

Such diversity is a tremendous asset to a chapter and the Fraternity.

The success of Delta Tau Delta's recent re-colonization at Georgia Southern reflects the success

## A cross-section of society

**Since the start of the 2000-01 school year, Delta Tau Delta established 18 colonies. The following lists indicates some of the other groups, honoraries and activities with which the founding fathers were involved:**

Soccer Team ♦ Outdoors Club ♦ New-student Orientation ♦ Wesley Foundation ♦ St. Thomas Aquinas ♦ Model United Nations ♦ Phi Eta Sigma ♦ Student Alumni Association ♦ Dance Club ♦ Peer Leadership ♦ Student Government ♦ Tau Sigma ♦ Center for Latino Outreach ♦ International Club ♦ Chi Alpha Christian Fellowship ♦ Union board ♦ College Republicans ♦ Young Democrats ♦ Green Party ♦ Colleges Against Cancer ♦ Baptist Student Union ♦ Student Newspaper ♦ Delta Sigma Pi ♦ Brass Ensemble ♦ Student Entertainment Squad ♦ Beta Gamma Sigma ♦ Phi Kappa Phi ♦ Phi Sigma Tau ♦ Tau Beta Pi ♦ Lesbian-Gay-Bisexual-Transgender Student Alliance ♦ Beta Beta ♦ Business Council ♦ Football Team ♦ Track Team ♦ Lacrosse Team ♦ Rugby Team ♦ Baseball Team ♦ Swim Team ♦ Basketball Team ♦ Asian-American Club

of the Fraternity's expansion model. The expansion team talked to more than a dozen university leaders from multiple areas and asked them to identify undergraduate leaders. The team then made contact with those men and gave them information about Delta Tau Delta, which started the process of creating a strong foundation for the new colony.

Imagine being a non-Greek, getting a phone call and hearing the following: "Hi, this is Nick Goldsberry from Delta Tau Delta. I was talking to the dean yesterday about locating the strongest leaders the campus offers and he told me to call you."

These leaders likely do not dismiss the caller as an annoyance. Instead, most listen and then make an informed and personal decision about Delta Tau Delta. More often than not, they choose to serve as a founding father for the new colony, and always that group is created out of a multiplicity of backgrounds.

While not the primary goal of recruitment, recruitment done properly creates diversity.

*Nick Goldsberry (Iowa State, 2004) serves as Delta Tau Delta's director of expansion. Previously he served as a chapter consultant, Deltas Talking About Alcohol intern and a leadership intern. While an undergraduate, he served in several capacities with the Gamma Pi Chapter.*

"Most of us in the field talk about this generation as being, at least on the college campus, more diverse and more familiar with diversity than any generation we've ever dealt with. In a sense, they are more accepting and more trusting in that concept. There's just a wider range of people who are showing up to the doorstep of the four-year institutions. That's very good but it also creates different challenges."

— Richard McKaig,  
dean of students and  
vice president for  
student affairs,  
Indiana University





## Nontraditional student strong fit for ASU colony

By George Rozansky

Just over a year ago, my wife and I, both lifelong residents of Michigan, moved across the nation.

After graduating from college and enjoying four years in my field, a Phoenix-area architecture firm offered me the chance to build on my blossoming career. The offer also allows me to study at Arizona State University's College of Design to earn my bachelor's degree of design with a major in architecture.

I had earned my associate's degree in applied science of computer-aided drafting and design from ITT Technical Institute. When I went to Arizona State, I returned to college at 25 for the first time in four years. Younger students surrounded me, some of whom were in seventh grade when I first went to college.

My age did not serve as an obstacle toward returning to college or as a reason not to live the college experience. So, the summer before school started, I talked to representatives from several houses. It was clear the Theta Gamma Crescent Colony men had the kind of positive values I wanted personally and professionally.

I readily accepted an offer to join the colony. The men were not concerned about my age, my marital status or my 40-hour-per-week job schedule. As a pledge, the members did not treat me differently than the other pledges. They continue to value my prior experiences and current life-situation.

Far from being just another member, I remain active in the colony. I currently serve as the honor board chairman, helped write the by-laws for the operation of the board and gratefully call myself the little brother of a 21-year-old, Ryan Leyba.

Joining the Fraternity has been a tremendous learning experience. My leadership, trust, accountability and many other positive personality traits have improved. Regardless of the age differences or me being the only brother with a wife at social events, my brothers have helped make me a better man. My membership and experience has hopefully done the same for them.

I believe I have made many new lifelong friends. My brothers are all people I can share life experiences with, including the expectation of my first child in December.

*George Rozansky is a junior majoring in architecture at Arizona State where he serves the Theta Gamma Crescent Colony's honor board.*

## Alumni volunteers play critical role in development of chapters

By Kevin Snyder

An alumnus volunteer can provide an indelible influence on the group of men with whom he works. Whether he demonstrates the purity of friendship, self-restraint, loyalty or fulfilling obligations, those lessons can serve as lifelong guides.

So should the lesson of understanding, a tenet of Delta Tau Delta. Empathy toward another's background, daily struggles and hopes keys the building of a strong and united institution at the local and national level. Part of the understanding an alumnus volunteer can foster comes with guiding the diversification of a chapter's population.

Often the term "diversity" conjures thoughts of gender, race, religion and ethnicity – especially black and white. Those words serve only to limit the definition of "diversity." We live in a pluralistic society more interconnected than any before. As our population grows and changes, so does the true meaning of "diversity." Much more than a mix of differences, it is about respecting commonalities among groups of people, taking account of all attributes. Diversity equals a climate of acceptance, respect and understanding.

Not until I served the Fraternity as a chapter consultant from 1999-2000 did I comprehend Delta Tau Delta's diversity. Each chapter had differences in facets many do not consider – and certainly ones I had not included previously – when thinking about diversity: size, demographics, academic achievement, shelter status and athleticism, to name a few.

Understanding the broad range of diversity guided me while serving as an assistant advisor and house corporation director for the Fraternity's South Carolina chapter and in the Greek Life departments at South Carolina and Embry-Riddle Aeronautical University. It continues to prove important in my current position in the Orientation Services department at Embry-Riddle.

**People 25 or older who are working and/or raising a family are the fastest growing group of people taking college courses.**

— U.S. Department of Education

See VOLUNTEER, page 34



# Duke chapter seeks endowment to aid with dues

By David Snider

The founding fathers of the recently restored Delta Kappa Chapter wanted a fraternal experience different from what was previously available at Duke University.

The existing groups on campus seemed homogenous and lacking of a significant contribution to the life of the university. Knowing a better model for Greek life was possible, the founding fathers sought a fraternity that fit their values. They chose Delta Tau Delta in the fall of 2003 because they identified with the Fraternity's motto of "committed to lives of excellence." They also believed it would serve as a strong foundation for their desire to establish a group with the tangible pillars of diversity and community.

Delta Kappa has distinguished itself through its commitment to these ideals and now is the largest fraternity chapter on campus with 107 men. The chapter's inclusiveness has allowed the group to transcend the traditional habits of Greek-lettered social organizations.

That inclusiveness has also brought in members from families who struggle to afford Fraternity dues. In the case of some current members, those dues amount to more than their tuition bills given their financial aid package. Since Delta Kappa returned to Duke, the undergraduates able to pay the full cost have subsi-

dized for those who cannot. While the chapter has maintained financial solvency, this model does not serve its long-term goals.

To help keep diversity a permanent component of the chapter, Delta Kappa is establishing an endowment that will allow members to pay the same percentage of dues that they pay in tuition. For example, if someone receives a 50-percent scholarship from Duke, he will pay \$200 of the \$400 fraternity-related dues.



Because of the chapter's "commitment to excellence" and desire for diversity and a strong community, Delta Kappa has connected with dozens of campus groups and organizations. Its members embody a true mixture of the Duke community: engineers and arts and sciences students, actors and athletes,

blacks and whites, Indians and Asians, Americans and foreign-born men, as well as, legacies and first-generation college students. The diverse membership has naturally continued because the founding fathers' varying backgrounds attracted a wide array of students.

Realizing this goal is not only important to Delta Kappa, but also to sustaining a model that might serve as a beacon for the rest of Duke's Greek community and possibly all of Delta Tau Delta.

*David Snider, from Newton, Mass., is a senior majoring in public policy and serves as Delta Kappa's vice president of external affairs.*

"Diversifying the pool of perspective members is huge. It's probably the most important factor in recruiting and, more importantly, in being a mainstream part of the future of America. As the demographics in our society change, to maintain the leadership role and position in the future we have enjoyed in the past, we need to be much more representative in our constituency."

— David L. Nagel (Iowa State, 1963), board member serving the Delta Tau Delta Educational Foundation and North-American Interfraternity Conference

## Experience in breaking barrier shaped alumnus' Delt experience

By Steve Karp

While a freshman at Tufts University in 1961, and after a fall of fraternity rush parties and freshman "smokers," I received a bid to join the Tufts chapter of Delta Tau Delta.

The invitation presented a problem. At the time, prospective members had to be white, of Anglo-Saxon descent and Protestant. I met the first two qualifications but not the latter one. I am Jewish.

The Delt brotherhood of course knew that. In view of the mounting university challenge to

fraternity discrimination and the increasing diversity of the Tufts student body, however, they also knew sustaining the status quo would consign the Beta Mu Chapter to certain oblivion.

Six years ago, I started to write a play about this. Last year "Fraternity" played at the Stamford Theatre Works in Stamford, Conn., where I am the founder and producing director. *The New York Times* (May 17, 2005) covered the production with a lengthy article entitled "When the Frat Recruited a Jew: Reliving a Painful Past" and gave the production a strong

review. Dramatic Publishing Company purchased the rights to publish the play and "Fraternity" will soon be available for commercial and amateur production.

While based on my own experience of joining Delta Tau Delta at Tufts, "Fraternity" is a fictional account of a Jewish college freshman named Sam Katz openly rushed by a chapter attempting to buck the anti-Semitic traditions of the national organization of which it is a member. The dramatization depicts how Sam's

See ALUMNI, page 34



# Minority remembers struggles, joys of college

By Gregory A. Peoples

The ever-so-frequent "ping" indicating a new e-mail came one Friday afternoon as I was finishing up with a student.

I glanced at my computer and noticed an e-mail from John Wainwright (Allegheny, 1971) with the subject line "A picture I found" and a photo of some Alpha brothers from the class of 1973. The photo Brother Wainwright sent caused me to reflect on my experiences as a young black male in a traditionally white fraternity.

I began at Allegheny in September 1969. There were approximately 1,800 students enrolled at that time, including 13 students of color – four of us were black in the freshman class. I quickly became best friends with five other men, all of whom were white, and we dubbed ourselves the "Sinful Six."

Despite going through rush during a period in which traditionally white fraternities rarely offered bids to black men, the "Sinful Six" made a pact that if we all decided to join the same fraternity, we would only join if each received bids. That commitment spoke volumes for the bond of brotherhood that remains so important to me today.

During that time and in years to come, the principles of Delta Tau Delta continued to be tested.

Several brothers and I drove to Florida for spring break my sophomore year. I awoke from a nap as we entered South Carolina and saw a billboard featuring a white horse draped in a blood-red blanket saddled by a figure robed in white with the wording,

"Welcome to South Carolina, the heart of Klan country."

None of us could believe our eyes. Unfortunately, our life-changing experiences during that trip did not end at the South Carolina border.

After arriving to Florida, we tried to



check into a hotel in an area one of our brothers and his family had stayed the year before. Surprisingly, at least four hotels were full despite their parking lots being practically empty. I considered seriously following my father's advice and flying home before we found a kind soul who agreed to rent us a room for the week.

The values of our fraternity: Truth,

Courage, Faith and Power were surely our foundation during that trip and in many times to come. These experiences and others shaped me and, I believe, my brothers into the men we are today. I know to a man,

integrity is essential and accountability is fundamental. For each of us, lifelong learning and growth are vital. Truly, brotherhood sustains us.

As I reflect on my experiences as a Delt at Allegheny College, I ask:

- Were my experiences being the only

black man in the group challenging? *Very.*

- Do I think I have helped others grow and learn from someone with a background and culture different from theirs? *Absolutely.*

- Would I have considered joining a historically black fraternity? *Yes. As a leader in my community, belonging to a black Greek organization is often an asset.*

- Has my life been enriched by being a member of Delta Tau Delta Fraternity? *Unquestionably.*

When faced with adversity, try diversity. If Delta Tau Delta is to sustain its status as a leader throughout the Greek community, it must continue to increase the diversity of its brotherhood. A diverse organization provides unlimited opportunities for personal and professional growth and development.

A diversified Fraternity today will produce key decision makers in a global society for tomorrow.

*Greg Peoples (Allegheny, 1973) serves as director of academic affairs for Delta Tau Delta. He has volunteered with the Fraternity for 13 years and serves as the ombudsman at Eastern Michigan University where he formally was dean of students.*

**In 2003, 12.5% of all male college students were non-white minorities. That was a 4% increase from 1993.**

— U.S. Department of Education



# Gay appreciates Delt experience, acceptance

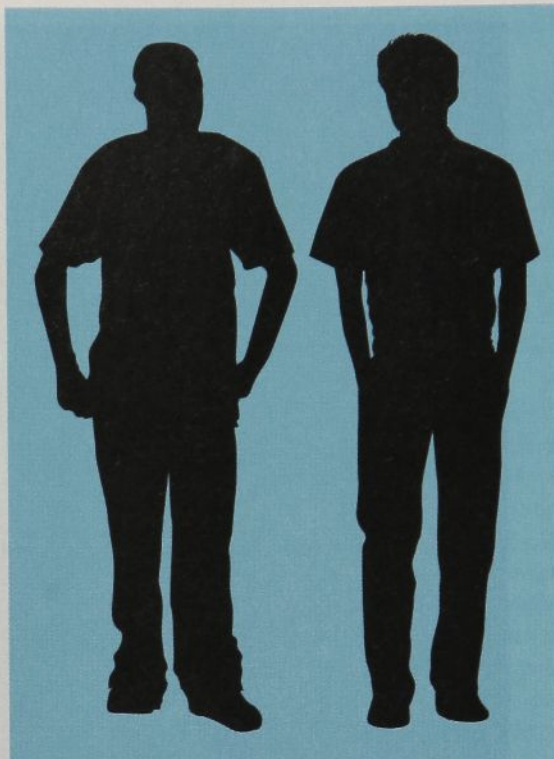
By David Borrelli

Our culture dictates a person be identified by a quality that most uniquely makes him different from the status quo. Many fraternity chapters avoid recruiting men whose most unique qualities make them "different" from the average brother. This is not the case at Epsilon Upsilon Chapter.

My brothers at Marietta College respect me. They appreciate what I give back to the chapter and the Fraternity and are grateful for my membership. I am thankful for that and, frankly, expect all Deltas to respect fellow brothers who share their values and contribute to the Fraternity.

Others in Greek life and outside, because of their personal beliefs, do not respect me. I am an openly gay man, which is a stumbling block for some people who cannot – or will not – get to know me or what I can offer.

During my freshman year as I looked at fraternities and tried to decide which one would suit my values and needs best, I was able to narrow my choices to two. The choice became much easier as the Epsilon Upsilon Chapter of Delta Tau Delta



continued to impress me with their adherence to strong values and their involvement in community service. Even before I expressed interest in joining the chapter, the Deltas showed they valued me.

They saw how we had similarities and appreciated my qualities that they identified as being uniquely Delt. My sexual orientation, while different than nearly all the brothers in the chapter, was no obstacle to my inclusion.

Epsilon Upsilon dealt with the subject of accepting gay men years before I arrived on campus and decided it was a non-issue. While other groups believe gay members are detrimental to their image and therefore a liability, the Marietta Deltas recruit men who improve their chapters and live the values of the Fraternity. Delta Tau Delta accepts men for who they are.

Other Greek organizations have questioned the image of Epsilon Upsilon because of its acceptance of gay members.

Derogatory references have been made about the chapter for whatever

See GAYS, page 34

## Desire for quality men trumps other concerns

By Craig Sundstrom

Will Kauf decided too many obstacles stood in his way to go through initiation with me and the rest of our pledge class at Marietta College.

Though he struggled with the financial responsibilities the Fraternity asks its members to accept, it was a much more personal struggle that stood as his main obstacle.

Kauf is gay and was prepared to "come out" around the time of the initiation ceremony in the fall of 2003. He was nervous about how the men in the chapter would react.

He talked to Casey Trail, the chapter's president at the time, about how, as a homosexual, he questioned his place in the brotherhood. Trail eased his fears and eloquently explained to a few of us how our chapter would only be stronger by accepting Kauf. He was right.

Now a junior, I serve as chapter president and have seen the benefits of my chapter's culture of acceptance. I find myself defending the chapter's decision to accept gay members. It has made us an easy target within the Greek community; some on campus have labeled us the "gay fraternity."

I enjoy speaking about the success the chapter has seen in part because of our acceptance of all good men who

desire to serve the chapter and the Marietta community. Since we collectively decided homosexuality does not limit the ability of a man, we have exceeded our recruitment goals repeatedly. We boast a roster of 48 men at a campus with an average of 35. We are a dominating force in leadership on campus, with members holding the vice president and treasurer positions in the student senate.

Any concerns we had before Kauf was initiated have been erased with the notion that brotherhood is about acceptance and not conformity. We vow to make our members better men, and excluding individuals on the basis of sexual preference doesn't fit that goal.

Since Kauf initiated with the chapter, we have initiated three other men who are gay or bisexual. All three have been intricate parts of our chapter, serving as ritualist, director of academics and house and grounds chairman. These men have taken on the Delt experience.

They have excelled as vital members in our brotherhood, and I am proud to call them brothers.

*Craig Sundstrom is a junior at Marietta College who serves as president for the Epsilon Upsilon Chapter. A native of Mentor, Ohio, Sundstrom is majoring in political science.*

In 1984, 30 percent of all college students were male and attended full-time.

By 2015, 26 percent will be fulltime males; 36 percent will be fulltime females.

— U.S. Census Bureau



In 1999–2000,  
9% of all  
undergraduate  
students in  
degree-  
granting  
institutions  
reported  
having a  
disability that  
created  
difficulties for  
them as a  
student.

—U.S. Department of  
Education

## Physically-challenged student thrives in Fraternity

By Beau King

As a minority, making friends sometimes proves challenging.

Misunderstandings, anxiety and outright discrimination often precede meetings between a minority and a non-minority. Sometimes those feelings dissipate over time. Sometimes they don't.

Despite being concerned my physical deformity might keep people from accepting me – as had occurred in the past – most students at Virginia Tech never let my differences interfere with getting to know me. I met numerous people in my residence hall during my first semester at school and made some good friends.

Very few of those friendships, however, compare to the ones I made since joining Delta Tau Delta.

Some of my closest friendships started my second

semester, after my residential advisor talked to me about the university's Greek system. He told me about its benefits, including the opportunity to make more friends and improve leadership skills. As a member of Delta Tau Delta, he said one of his most treasured benefits of belonging to the Iota Zeta Chapter was its diversity.

It did not take long for me to appreciate the generosity and acceptance my brothers have shown since I pledged the Fraternity. It became clear almost immediately how our differences created strength.

They do not care about my condition, a prenatal joint disorder that caused scar tissue to form over my joints causing inhibited range of motions and growth. They do not care I am unable to score the winning touchdown. They do not complain I am unable to participate in all of

See **DISABLED**, page 34

## Political differences in chapters served Congressmen

By Congressman Tim Ryan

Being a Delt at Bowling Green State University had a significant influence in shaping both my personal views and my political vision. I was fortunate enough to have brothers in the Fraternity who came from many diverse backgrounds, diverse upbringings and diverse parts of the country. Consequently, I gained exposure to vastly different opinions and political persuasions — all coexisting in one place.

It was both a formative and positive experience. It helped me to see the

humanity in all of us, as my brothers and I learned to respect the circumstances that shaped other people's lives and to use their

collective wisdom and assorted backgrounds to think differently.

Even if I didn't always see eye-to-eye with the opinions of some of in my chapter, we all respected each other immensely, and we knew that at the end of the day we would find common ground on other matters.

*Rep. Tim Ryan (Bowling Green State, 1995) serves the 17th district of Ohio and is in his second term. Rep. Ryan, a Democrat from Niles, Ohio, was the youngest member of his party when he was first sworn in on Jan. 7, 2003.*

By Congressman Paul Ryan

During my college years, I never would have predicted discussions with my Fraternity brothers were preparing me to serve as a representative in the U.S. Congress. Looking back, I see how much I learned from my fellow Deltas and from living in a shelter with others who did not always share my views.

Part of the richness of the fraternity and sorority experience is interacting with people who come from different places and backgrounds and encompass a wide range of opinions and ideologies. Not only does this give stu-

dents a better grasp of why others hold opposing positions, it helps them better understand and defend their own positions – or change them based on new information they learned.

A cardinal rule of effective debating is to understand thoroughly the other side's line of argument. You learn a lot in the process.

An added benefit of politically diverse fraternities is they encourage members to find common ground, forge lasting friendships and work together as colleagues across party lines. Some

of my life-long best friends are my pledge class brothers who are Democrats – even liberals! We could use more of this collegiality in Congress today, although civility across the political aisle is not as scarce as media coverage suggests. Members of Congress can disagree strongly but still treat one another with respect and cooperate on shared goals, just as members of effective fraternities do.

*Rep. Paul Ryan (Miami, 1992) serves the first district of Wisconsin and is in his fourth term. Rep. Ryan, a Republican from Janesville, Wisc., received the Fraternity's Alumni Achievement Award during the 2004 Denver Karnea.*





## ALUMNI, from page 30

two upper class WASP (white, Anglo-Saxon, Protestant) recruiters put themselves in direct conflict with the national organization and the chapter's venerable advisor, both intent on maintaining the status quo.

I viewed the brotherhood's decision to challenge the national discriminatory policies and recruit me as nothing less than heroic and its courage no less extraordinary because of the growing student activism of the period. The strength and courage of brother Donald Curtis (1963) and chapter president Larry Clinton (1962) to stand against what they saw as an injustice despite intense pressure still serves as an inspiration. Both are strongly depicted in "Fraternity."

In 1961, America was discovering an energy that reflected the youthful vigor and idealism of the newly elected president, John F. Kennedy. Kennedy's influence on the American youth triggered an activism that inspired college students to believe they could truly make a difference. It was an exciting time because the country was changing and because the changes that occurred would forever owe their incubation to "the college campus," which served as a laboratory for challenging the status quo and for questioning the efficacy of prevailing social, cultural and political thought.

Though challenges to the Fraternity's discriminatory policies might have been occurring simultaneously on other campuses, my open induction as a Delt, along with another fellow Jewish classmate, ended the Delt restrictive policies at the Beta Mu Chapter. To my knowledge, the chapter's decision to bring me into the brotherhood helped influence Delta Tau Delta's decision to remove constitutionally and irrevocably its sectarian and racial requirements for Delt membership.

*Steve Karp (Tufts, 1965) is the founder and producing director for the Stamford Theatre Works in Connecticut.*

## GAYS, from page 32

reasons – maybe it's frustration with our influence on campus or our tight-knit brotherhood. Regardless, if anything, being referred to as "the gay fraternity" has served only to bring the brothers of the Epsilon Upsilon Chapter closer and solidified an understanding of why it is important to be the bastion of acceptance in Greek life.

The values important to all Deltas determined the brothers' decision to invest in me. My decision to live these values as a member of Delta Tau Delta was largely based on seeing those values practiced in the daily lives of members. I've

## DISABLED, from page 33

the sororities' philanthropies.

What they do care about is that I am always there to root for them and help in any way possible with events. The care that I love the chapter and the Fraternity and am willing to do whatever I can to make both better. I enjoy my brothers' respect, and they have elected me to several leadership positions.

With no unifying culture of disabled people, commonalities do not readily reveal themselves and offer common ground on which to build friendships. We do not seek others with comparable conditions just because they are handicapped. While new minority-based fraternities form – such as Latinos, Muslims and Asians – and traditionally black fraternities continue to prosper, I know of no fraternities specifically for physically challenged students.

seen it through their acceptance of me and sometimes through their defense of me when my sexual orientation is made an issue by someone outside the group.

Our values are shown through each of our brothers, and they can be seen when we look past differences such as sexual orientation. This is what I saw in the men of Delta Tau Delta, and that is why I am a member of this brotherhood today.

*David Borrelli is a sophomore at Marietta College who serves as the house and grounds chairman for the Epsilon Upsilon Chapter. A native of Oxford, Conn., Borrelli is majoring in psychology, minoring in communications and obtaining a certificate in leadership.*



I am grateful my brothers at the Iota Zeta Chapter looked past our differences and accepted me for what I offer the Fraternity.

*Beau King is a senior from Yorktown, Va., who is majoring in marketing and psychology at Virginia Tech. He has served as vice president and recruitment chairman for the Iota Zeta Chapter.*

## VOLUNTEER, from page 29

As an alumnus volunteer, you affect how – or if – the chapter and men with which you work promotes an environment of acceptance. What steps can you take to take toward this end? Some ideas:

- Include activities that foster the appreciation of diversity. Consider sponsoring such an event.
- Create a diversity statement that promotes respect for all people and display it prominently in your shelter.
- Coordinate a community service event between groups of differing backgrounds, i.e., have your chapter, the local Alpha Phi Alpha

chapter and a foreign-students society work together to have a "clean-up" day at a local school.

- Develop a procedure for addressing behaviors not consistent with the values of Delta Tau Delta.

Unfortunately, incidents of ignorance happen: a man arrives at a party in blackface; a man shouts a racial epitaph at a person walking past the shelter; chapters refuse to recruit men based on their appearance, where they are from, their athletic ability, or any other superficial reason. Look at the outcomes of those actions. They have proved society does not tolerate intolerance and the chapters that engage

in such activity struggle in multiple respects.

As an alumnus, you have the power to foster the understanding Delta Tau Delta holds sacred and to help the men of your chapter grow not only in numbers but, more importantly, as people.

*Kevin Snyder (North Carolina at Wilmington, 1998) works in the orientation services department at Embry-Riddle Aeronautical University in Daytona Beach, Fla. He served the Fraternity as a chapter consultant from 1998-2000, as an assistant chapter advisor for the South Carolina chapter from 2000-2003 and the chapter's house corporation director from 2002-2004.*

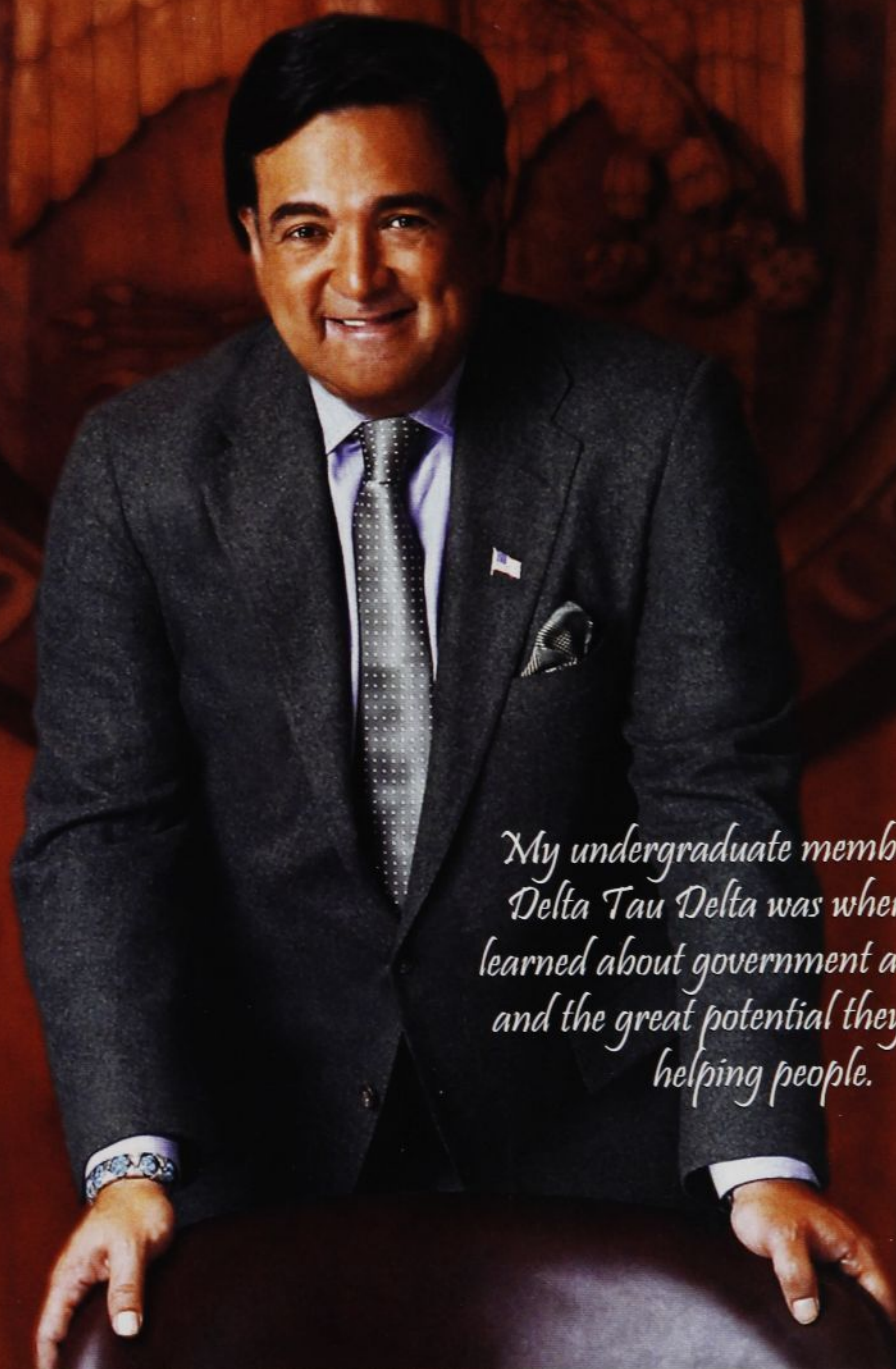


# *I Believe in Delta Tau Delta*

**Bill Richardson  
Tufts University  
Beta Mu Chapter**

**New Mexico Governor  
Trustee of Tufts University  
Board Member of the Natural Resources Defense Council**

**Brother since 1968**



*My undergraduate membership in  
Delta Tau Delta was where I first  
learned about government and politics  
and the great potential they hold for  
helping people.*

*Delta Tau Delta Fraternity ~ Committed to Lives of Excellence*





# "Wow. Now that was easy."

Finding the best screen printer for  
t-shirts and favors has never been easier.

At GreekQuote.com, with a few clicks you  
have a national network of licensed vendors  
competing to win your order.



## GreekQuote.com

Where you always win.



## The Rainbow

Delta Tau Delta Fraternity  
10000 Allisonville Road  
Fishers, Indiana 46038-2008

*Parents: While your son is in college, his magazine is sent to his home address. We hope you enjoy it. If he is no longer in college and is not living at home, please send his new address to the Delta Tau Delta Central Office on this form or go to [www.delts.org](http://www.delts.org)*

If your address has changed, please  
go online to [www.delts.org/info](http://www.delts.org/info) to  
update your contact information.