



The PICTORIAL of THE RAINBOW OF DELTA TAU DELTA

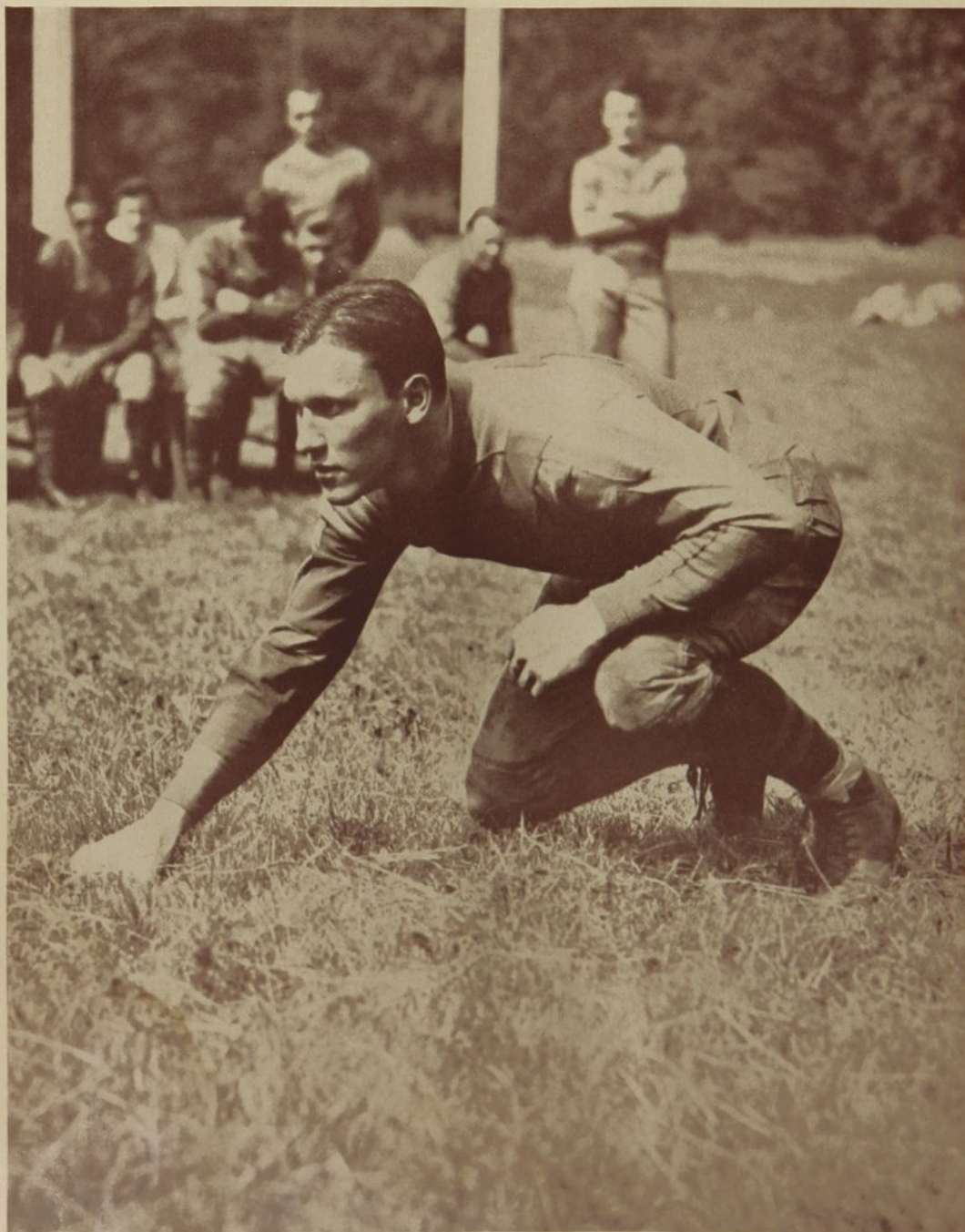
March, 1930



CAPTAIN ARCHIBALD L. PARMELEE, Beta Omega (California), '15
With a pet of his, Uncle Sam's biggest railway gun.
(see text)

THE RAINBOW PICTORIAL

Everybody Picked Him!



RAY MONTGOMERY, *Gamma Sigma* (Pittsburgh)
Sports writers picked their own All-Americans, but everybody included this Delt.

THE RAINBOW PICTORIAL



PURDUE'S WINNING INTERFRATERNITY DEBATING TEAM

Top row: THOMPSON, W. HALLSTEIN, MASTERSON, TRAYLOR; bottom row: ATKINSON, TEWDSBURY, MACDONALD.
Traylor also won the all-University oratorical contest, and Masterson the freshman oratorical contest.



Universal Flyers' Ford plane, that carried 25,000 passengers, made 4,000 flights, and visited 100 cities, all safe. The inset shows Leo J. Rocca, *Gamma Eta* (*George Washington*), '23, company president, organizer and director of the tour.

—Photo by C. O. Buckingham Co., Inc.

An Olympian for the Olympiade



W. M. CREAKBAUM, *Gamma Upsilon* (Miami), '20

Read in this number about the Delt whose job it is to attend to all the publicity in connection with the Xth Olympiade, at Los Angeles, in 1932.

THE RAINBOW PICTORIAL

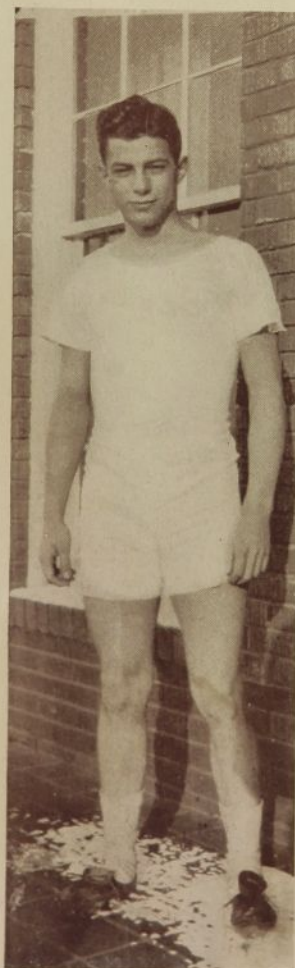
Seattle, 1931!



Some Mopping Up at Iowa



Interfraternity Swimming Champions: WAYT, MACALISTER, JARVIS, MALEY,
PARKER, WEBBER, STARR, and FIELD.



Pledge D. Parker, winner
Interfraternity cross-
country.



Trophies, and More Trophies!



Pasadena's Famous Rose Bowl



—Photo Copyright by Spence

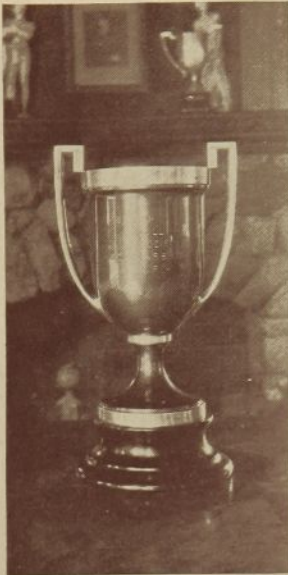
Four Delts in the Big Game



—Southern Pacific Photo

Tully, Edwards, Montgomery, and Parkinson, of the Pitt team.

THE RAINBOW PICTORIAL



Beta Nu (Maine)
wins the Senior Skull
Scholarship cup.



GEORGE B. KING
Delta Kappa (Duke)
Phi Beta Kappa, average of 96%.



Beta Nu (Maine)
GERALD BUTLER wins the
lightweight boxing cup.



The Gentlemen of Gamma Tau, at Kansas
Hosts to the Western Division Conference.

Missouri Breaks Through



EMERICH VAVRA
Rifle Letter, Musketeers, Chairman Chapter
Committee on Intramurals, three
championships.



RICHARD DIEMER
President Student Senate, Blue Key, Tri-Chi,
Student Council, Chapter Vice-
President.



GUY GREEN
President Workshop, Debating Team, President
of the Chapter.



THE RAINBOW PICTORIAL

And Here's Ole Miss, Too!



W. R. HOLLINGSWORTH
Art Editor of the Annual.



DEE COLLINS
Football Manager and other things.



HAYS MCCAULEY
Interfraternity Council, etc.

THE RAINBOW PICTORIAL



B. F. KENNEY, *Beta Nu* (M. I. T.)
Chapter president, *Tau Beta Pi*,
Business Manager *VooDoo*, etc.



ROBERT NELSON, *Beta Nu* (M. I. T.)
Captain basketball, *Tau Beta Pi*,
Walker Club, etc.



BISHOP WILLIAM T. MANNING of New York, *Beta Theta* (Sewanee), '93, inducting the Rev. Milo Gates as Dean of the Cathedral of St. John the Divine.

—International News Photos, Inc.

THE RAINBOW PICTORIAL



CHUCK HANSON
Gamma Phi (Amherst)
goalie star against Pennsylvania
and Princeton.



BOB BOWDITCH
Gamma Phi (Amherst)
forward; also tennis captain
and chapter president.



The Water Front at Seattle
(As you may suspect, this is part of a publicity campaign!)

THE RAINBOW PICTORIAL

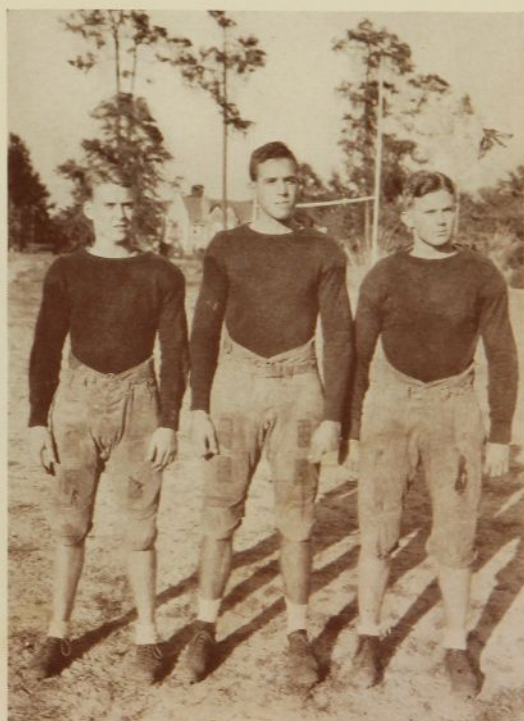
Florida Sends In a Husky Bunch



C. W. DOPSON
chapter president



ROYCE GOODBREAD, "CANNONBALL" CRABTREE, WEBBER HAINES—all sorts of letters in football, track, basketball, and wrestling.

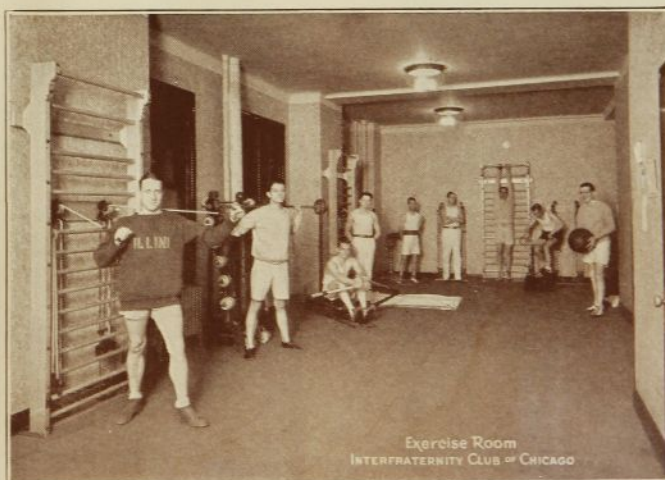


BAER, GUNN, MCQUITTY, all Florida pledges who earned '29 numerals in football, and are headed toward the Big Team next fall.

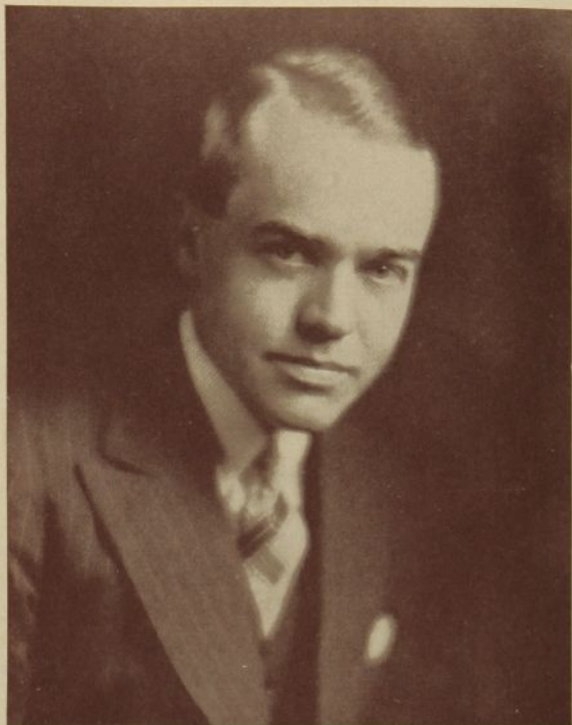
Chicago Fraternity Men



Move Into New Quarters



THE RAINBOW PICTORIAL



LEROY D. OWEN, *Gamma Alpha (Chicago), '21*
President of the Los Angeles Junior Chamber
of Commerce.



WALLY THOMPSON
Beta Kappa (Colorado), '26
Vice-Consul at Ceylon, on
the Trocadero.



F. L. SACHA
Gamma Psi (Ga. Tech)
baseball manager, president
Marionettes, chapter
president, etc.



THE SHELTER AT DELTA
(Michigan)
Decorated to win first prize at the Harvard-Homecoming game.