



The PICTORIAL of THE RAINBOW OF DELTA TAU DELTA

January, 1930



NELSON TRUSSLER JOHNSON, Gamma Eta (George Washington), '10
Appointed American Minister in China (see text).

—Photo by Underwood & Underwood

THE RAINBOW PICTORIAL



Seattle Delts Begin Plans for 1931
(see text)



Hosts of the Eastern Division Conference: Beta Chi (Brown)
(see text)

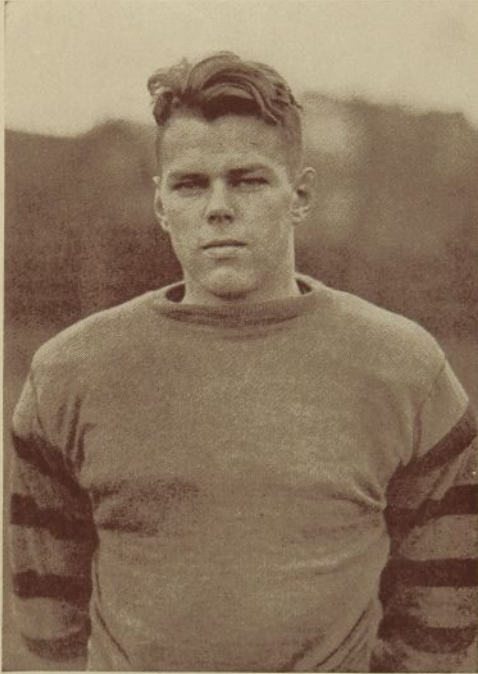
The New Executive Secretary



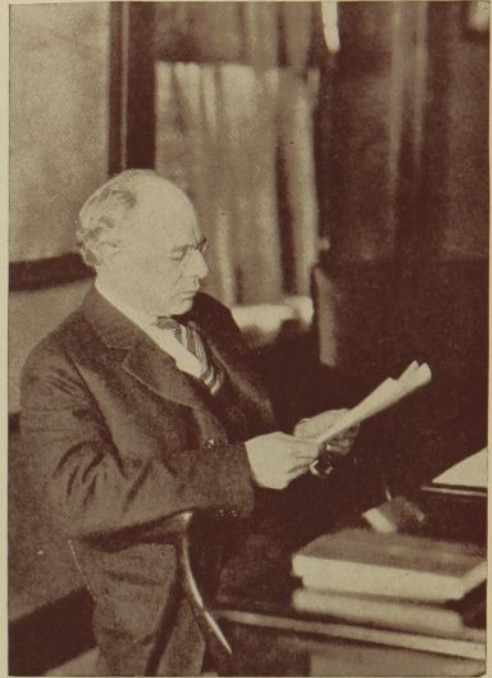
DANIEL L. GRANT, *Gamma Omega* (North Carolina), who has entered the Central Office. Read in this number how he sizes up the fraternity situation and Delta Tau Delta's program.

THE RAINBOW PICTORIAL

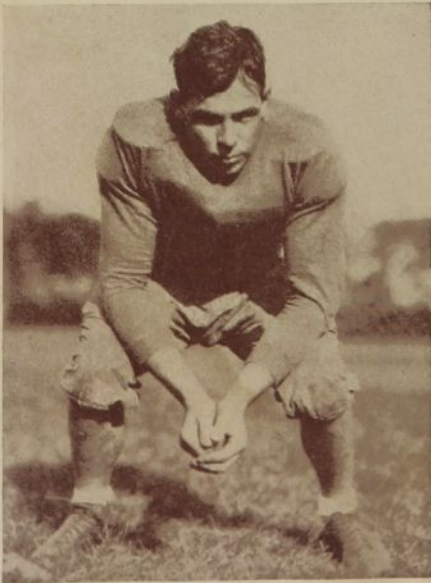
Here's a Page from Old Tufts



HOWARD GODREY,
veteran end and other things.
Amiable looking, isn't he?



PRESIDENT COUSENS,
sitting in his study and reflecting
how much worse it might be.



GEORGE LECAIN



ROBERT E. POLK

These fellows have such strings of distinctions that there's no use trying to list them here.
Just look at Beta Mu's letter.

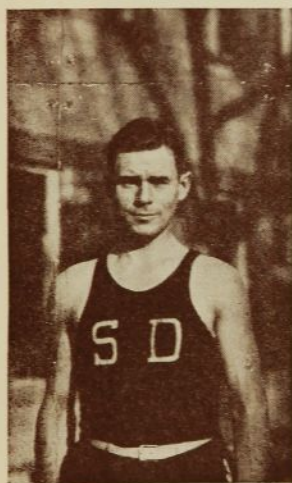
THE RAINBOW PICTORIAL



Four Junior Managers in Major Sports!
Beta Omega (California)
JUDGE, crew; MORRIS, track; PRICE, tennis; LAYNE, baseball.



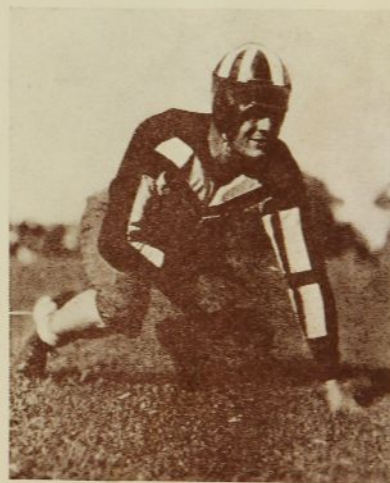
JULIUS STAHR
Gamma Phi (Amherst)
Three years a star at soccer.



GLENN PATTERSON
Delta Gamma (South Dakota),
who carries the basketball
hopes of his university.



"BUDDY"
Beta Omega's mascot. Why did they write in something about
an Airedale and a heavyweight championship? Jock
won't weigh 75 pounds even after meals.



HERMAN EBSEN
Delta Gamma (South Dakota),
husky tackle for three years
and big activity man.

THE RAINBOW PICTORIAL

Pictures are Inadequate to Reveal

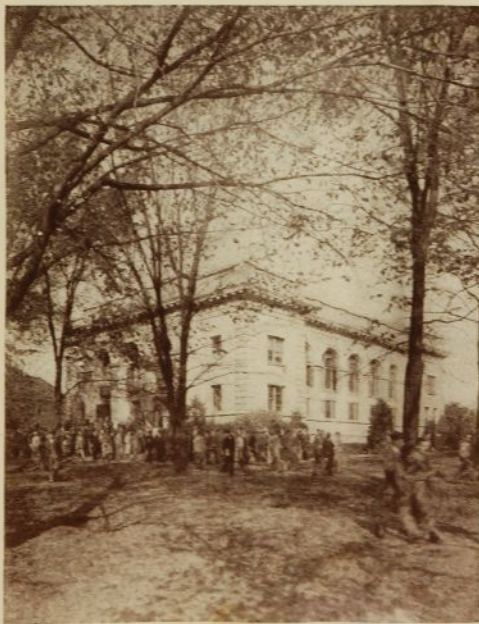


Old Main

the Beauty of Penn State's Campus



The Agricultural Building



The Auditorium

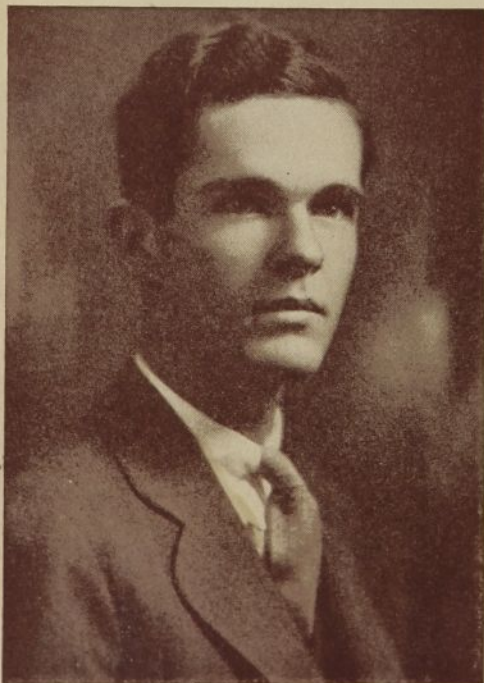


The Armory

THE RAINBOW PICTORIAL



—Photo by J. Art Ohl Studio: Gamma Sigma, Pittsburgh, Wins Prize for Best Decorated House (see text).

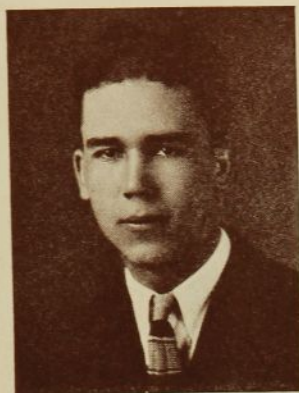


ROBERT SHANKLIN
Beta Chi (Brown), '29
Our newest travelling secretary,
and a good one.



NAT FITTS
Beta Kappa (Colorado), '10
Western Division vice-president,
always on the job.

A Few From Gamma Alpha, at Chicago



WILLIAM G. BURNS
Phi Beta Kappa

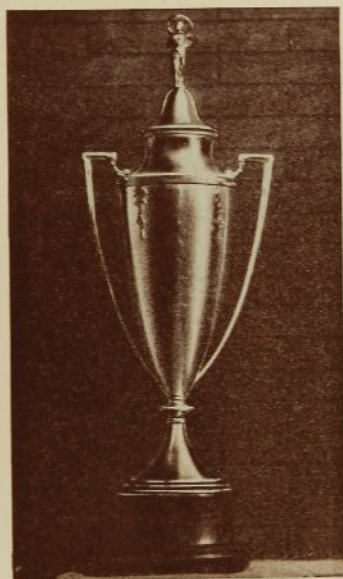


FRED C. HACK, JR.
President
Interfraternity Council

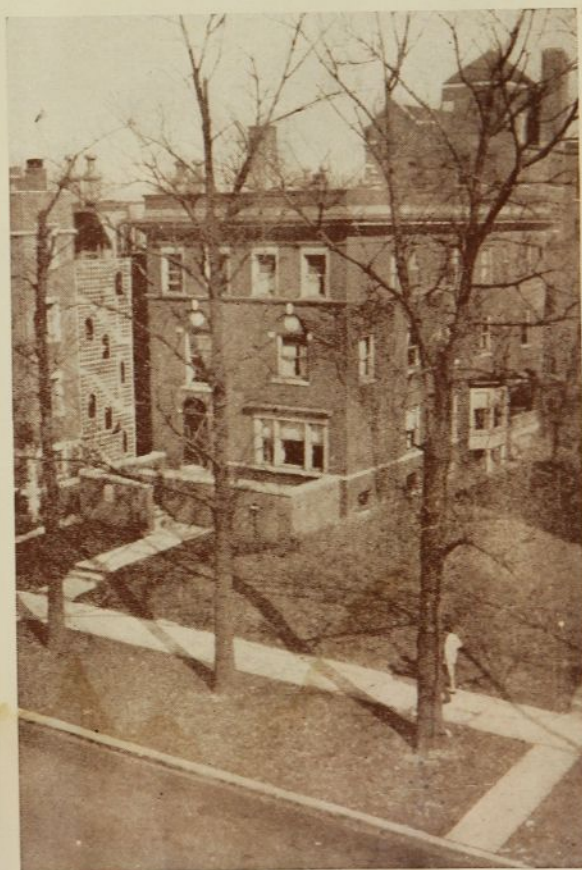


WILLIAM SULLIVAN
Chapter President

The Interfraternity Sing Cup



Won for the most alumni, faculty
members, and actives
turning out.



A different picture of the Shelter, from the pigeon roosts
in Stag Field, across the street.

THE RAINBOW PICTORIAL

Gamma Delta, in Old West Virginia



On the Trail of the Lonesome Pine



THE RAINBOW PICTORIAL

Seattle, 1931!



THE RAINBOW PICTORIAL

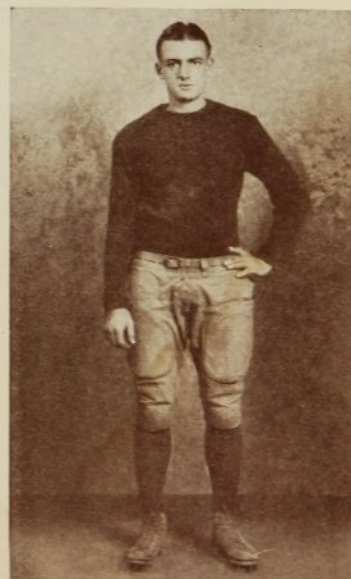


GOVERNOR GEORGE H. DERN of Utah, *Beta Tau* (Nebraska), '97
A mighty hunter, with his quarry.

—Acme Photo

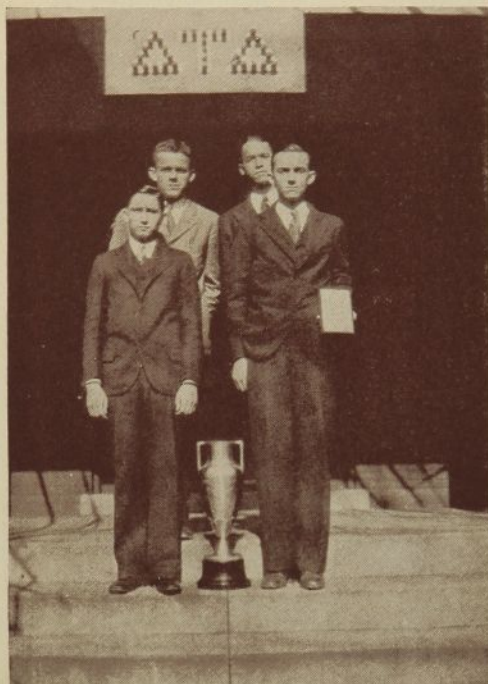


GLENN LOUCKS
Gamma Omicron (Syracuse)
President Men's Senate, basket-
ball, baseball, football.

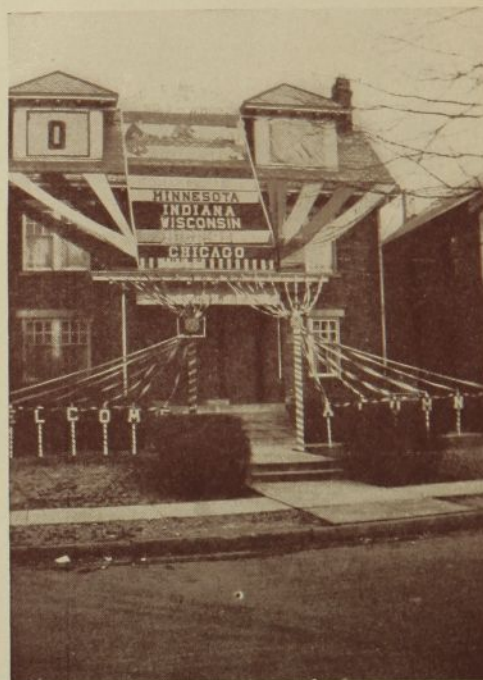


JOHN VALLANCE
Epsilon (Albion)
Co-captain football; All-M.I.A.A.
mention.

Beta Phi Pledges Win Scholarship Cup



SPURNER, WALTERS, KRAMER, PARKER,
with the scholarship cup and the
Phi Eta Sigma plaque.



And here's the big Shelter
decorated for Ohio State's Homecoming
and star football game.



ELDRED LARSEN
Beta Tau (Nebraska)
President Student Council,
President Innocents, etc.

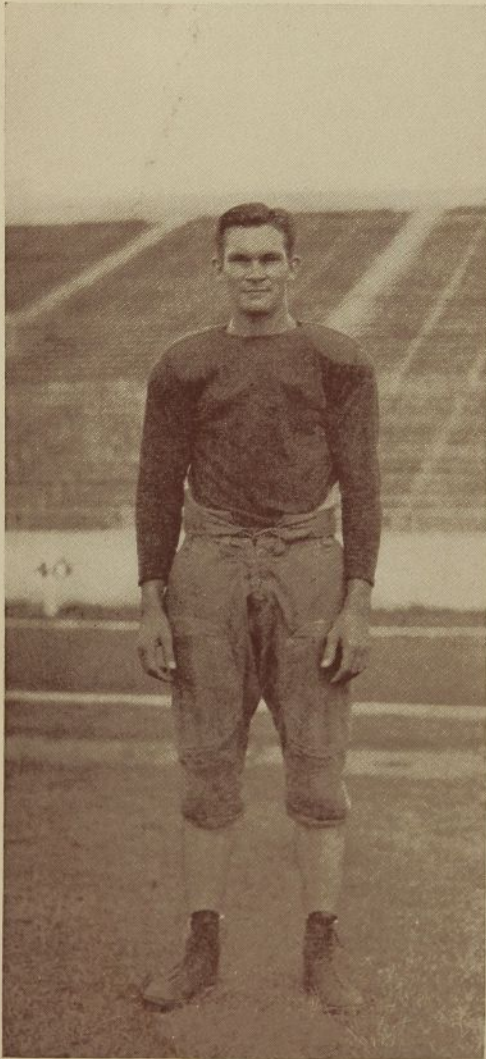


RAY BANNISTER
Delta Alpha (Oklahoma),
Managing Editor
of the Sooner yearbook.

More Whoopee Promised at Seattle



Texas Turns to Delts in Baseball



Up above is Frank Higgins, likewise of *Gamma Iota*, star halfback, but also captain of the Texas baseball aggregation.

Down below is VAN LAMM of *Gamma Iota* (Texas), varsity halfback and white hope of the Texas Longhorns when it comes to clouting the horsehide this spring.

