



The PICTORIAL *of* THE RAINBOW OF DELTA TAU DELTA

November, 1929



The Man Responsible for the British-American Conferences
EDWARD PRICE BELL, Beta Psi (Wabash), '99. (See text)

—Photo by The Chicago Daily News

Gamma Lambda Opens Her New Shelter



And Purdue Has Another Handsome House



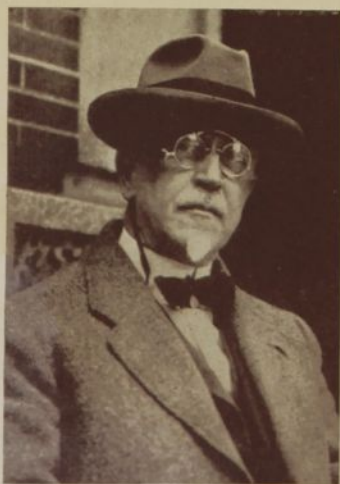
THE RAINBOW PICTORIAL

Some Great Delt Newspaper Men

(see text)



EDWARD T. LEECH and his two Delt Youngsters
Editor of *The Rocky Mountain News*, Beta Kappa (Colorado), '14



F. LAURISTON BULLARD
Psi (Wooster), '01
Chief Editorial Writer *The Boston Herald*



HERBERT ADAMS GIBBONS
Omega (Penn.), '02
Globe Trotter and Author

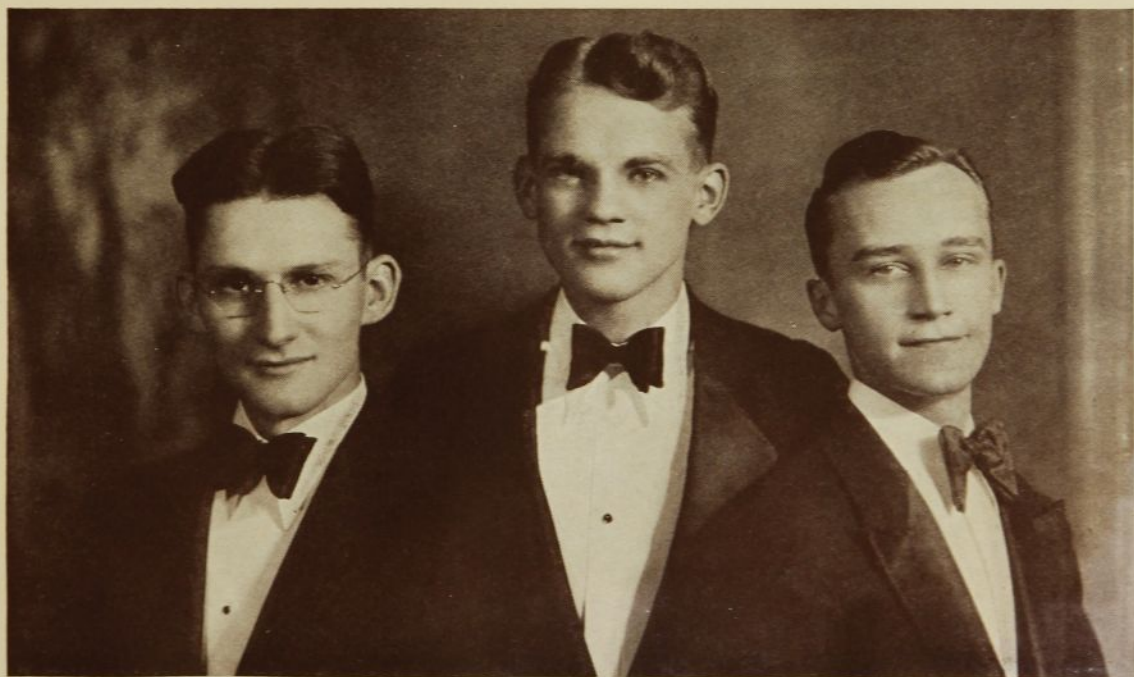


CHESTER H. ROWELL
Delta (Michigan), '88
Publisher *The Fresno Republican*

THE RAINBOW PICTORIAL



ANNIE MEYER, for thirty years Wisconsin's beloved housekeeper (see text).



THE BUTLER TRIO—VIRGIL HEBERT, RUELL MOORE, SEWARD BAKER

These are the boys whose singing stopped every program at the Golden Karnea. Ruell's smile alone is worth \$1,000,000.
—Photo by Platt Studio

THE RAINBOW PICTORIAL



What Gamma Kappa (Missouri) looks like these days.



And this is the bunch that lives inside.

THE RAINBOW PICTORIAL



RONALD MCKAY
Alpha (Allegheny)
football captain-elect, killed in an automobile accident.

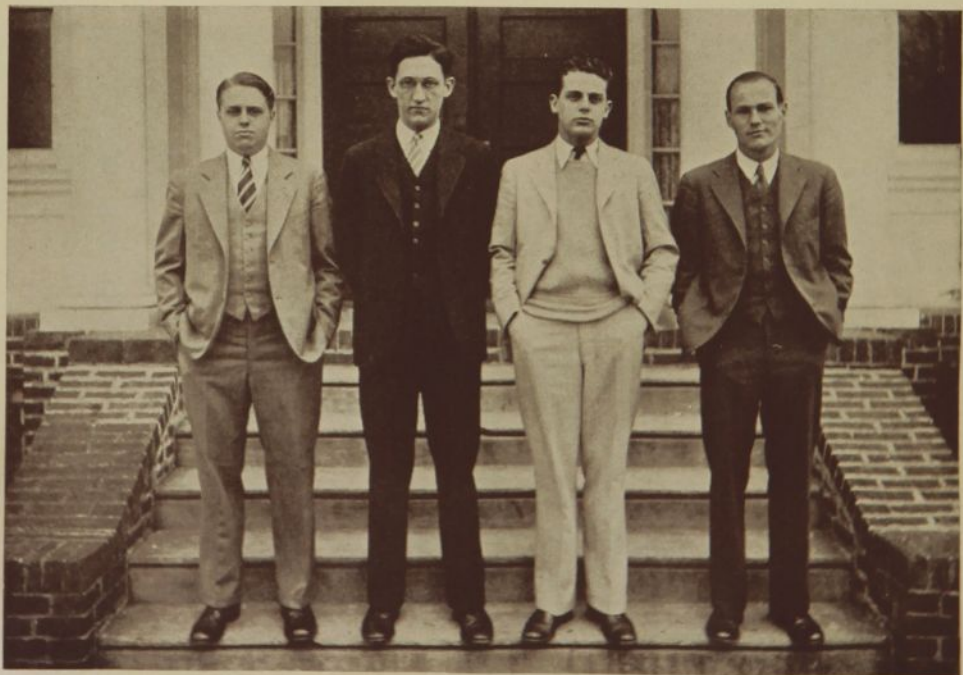


DR. CHARLES E. LOCKE
Beta Omega (California), '19
who lost his life in the Cleveland Clinic disaster.



RALPH L. CARR, *Beta Kappa (Colorado), '10*
taking the oath as United States District Attorney of Colorado.

Here Is Nu's Shelter at Lafayette



NU'S MANAGERS

ADAMS, glee club; GOURLEY, football; HERRING, soccer; LUMBARD, President Interfraternity Council.

And Here Is Nu's Chapter Team



Nu's Varsity Men—ETTER, BOOZ, VAN DESBECK, and SANDBACK

Here's a Delt of Whom You've Heard



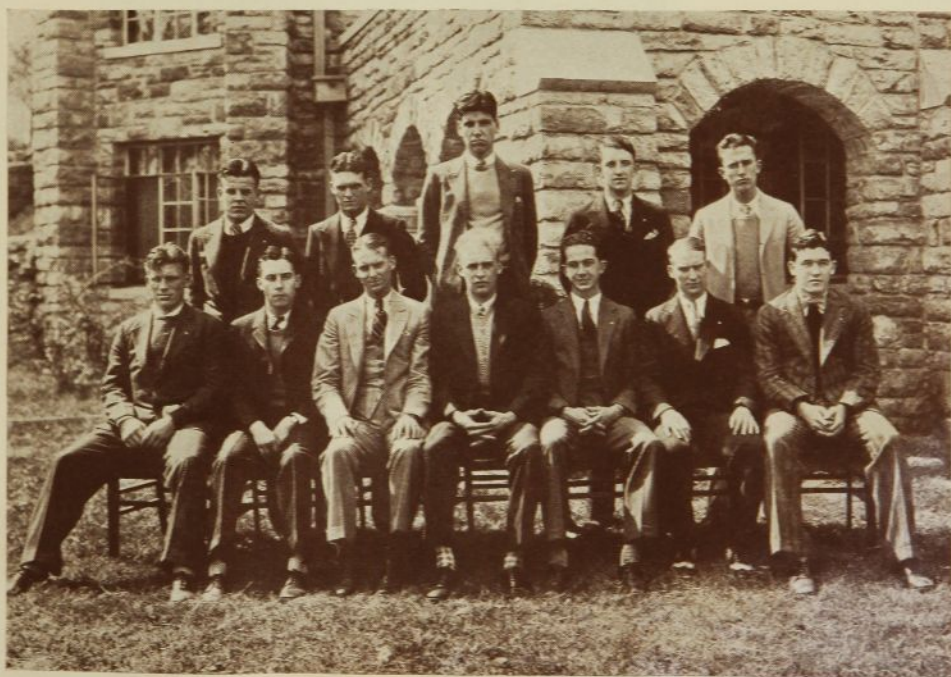
GEORGE SISLER Delta (Michigan), '15
Teaching his Delt kid—another one—the fundamentals of baseball.

—Photo by New York Tribune-Acme.

Another Display from Gamma Tau, Kansas



A new picture of that attractive new house.



These are this year's pledges: front row: ROST, ANDERSON, H. CRONE, NOBLE, COOMBS, M. CRONE, TAINTER; back row: MORRISON, MESERVE, TAYLOR, BROWN, COX

THE RAINBOW PICTORIAL



Guessing Contest: Who is this person from Denver?
If you guess right, you're expelled.
Kenneth Briggs took it.



This is Carl Kuehnle, of the Loyalty Fund. The
offspring will have to be a Delt sister.



Here's FRED HARBRIDGE, Beta Gamma (Wisconsin),
as a sweet young thing in the Haresfoot Club chorus.

THE RAINBOW PICTORIAL

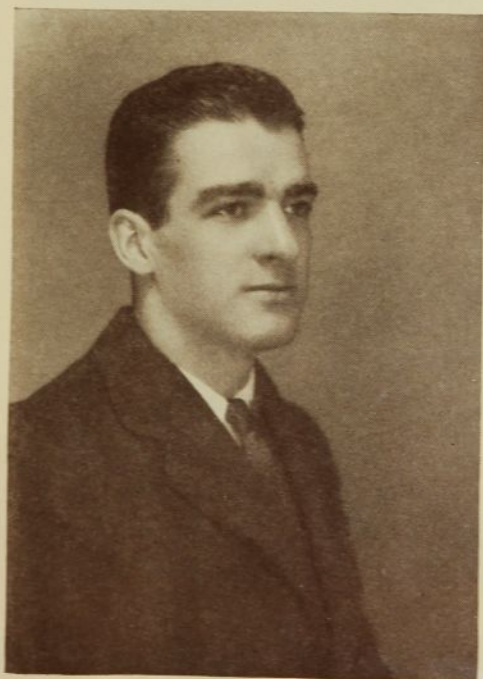
*A Nice
Exhibit*



*From
Duke*



EVERETT WEATHERSPOON
Tau Kappa Alpha, Vice-President Student Govern-
ment, President Polity Club, Omicron
Delta Kappa, etc.

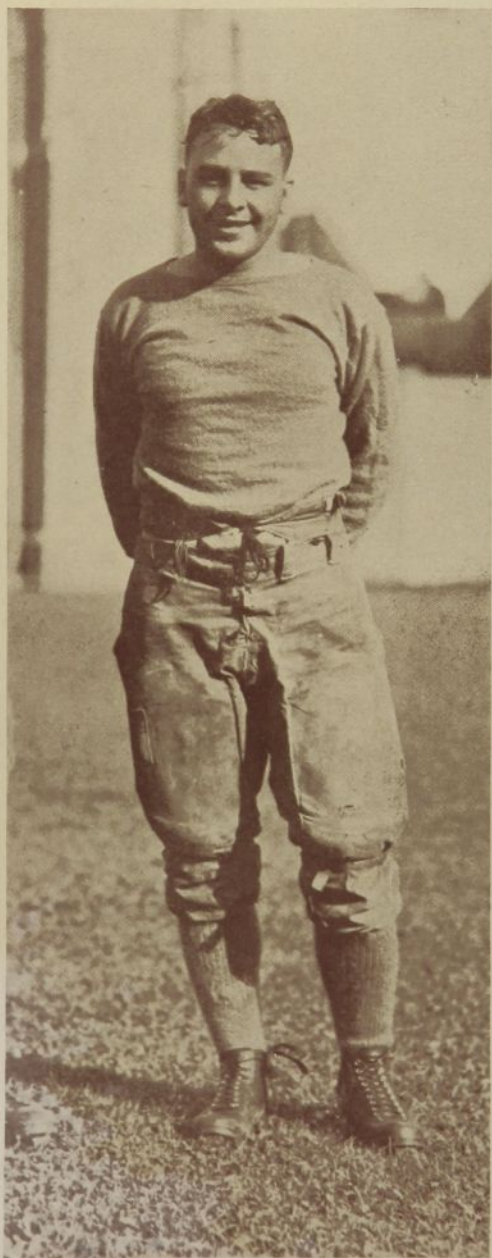


ALTON SADLER
Manager swimming, etc.



C. LAMAR FAIR
Manager boxing, etc.

THE RAINBOW PICTORIAL



JOHN STEWART of Delta Theta (Toronto)
Star varsity gridder



Four intramural captains at W. & J.: DUNN, basketball; POLLACK, water-polo; JENNINGS, volley-ball; SNEE, swimming.



HUGH DELL
Delta Theta (Toronto)
Winner of Moss Scholarship for all-round proficiency.